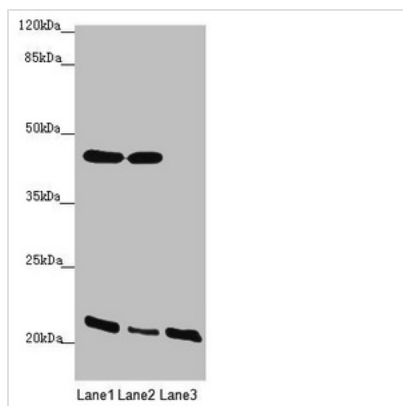




# ZDHHC16 Antibody

<b>Product Code</b>	CSB-PA846578ESR2HU
<b>Storage</b>	Upon receipt, store at -20°C or -80°C. Avoid repeated freeze.
<b>Uniprot No.</b>	Q969W1
<b>Immunogen</b>	Recombinant Human Palmitoyltransferase ZDHHC16 protein (288-377AA)
<b>Raised In</b>	Rabbit
<b>Species Reactivity</b>	Human
<b>Tested Applications</b>	ELISA, WB, IHC; Recommended dilution: WB:1:1000-1:5000, IHC:1:20-1:200
<b>Form</b>	Liquid
<b>Conjugate</b>	Non-conjugated
<b>Storage Buffer</b>	PBS with 0.02% sodium azide, 50% glycerol, pH7.3.
<b>Purification Method</b>	Antigen Affinity Purified
<b>Isotype</b>	IgG
<b>Clonality</b>	Polyclonal
<b>Alias</b>	Palmitoyltransferase ZDHHC16 (EC 2.3.1.225) (Abl-philin 2) (Zinc finger DHHC domain-containing protein 16) (DHHC-16), ZDHHC16, APH2
<b>Immunogen Species</b>	Homo sapiens (Human)
<b>Research Area</b>	Cell Biology
<b>Target Names</b>	ZDHHC16

## Image



### Western blot

All lanes: ZDHHC16 antibody at 1.91 µg/ml

Lane 1: MCF-7 whole cell lysate

Lane 2: HepG2 whole cell lysate

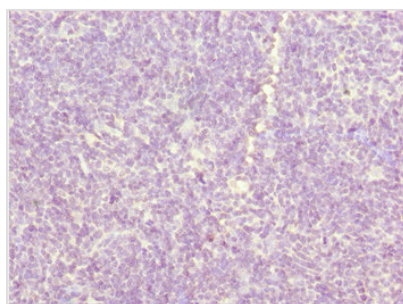
Lane 3: A375 whole cell lysate

Secondary

Goat polyclonal to rabbit IgG at 1/10000 dilution

Predicted band size: 44, 42, 39, 35 kDa

Observed band size: 44, 22 kDa



### Immunohistochemistry of paraffin-embedded

human thymus tissue using CSB-

PA846578ESR2HU at dilution of 1:100



---

**Usage**

For Research Use Only. Not for use in diagnostic or therapeutic procedures.