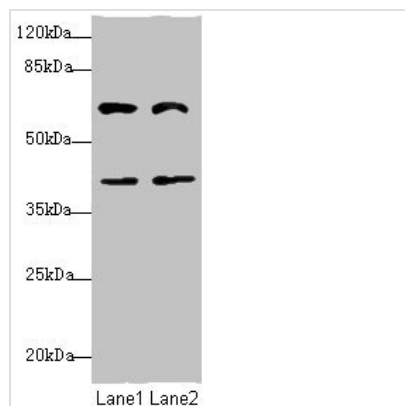




# DCP1A Antibody

<b>Product Code</b>	CSB-PA885684ESR1HU
<b>Storage</b>	Upon receipt, store at -20°C or -80°C. Avoid repeated freeze.
<b>Uniprot No.</b>	Q9NPI6
<b>Immunogen</b>	Recombinant Human mRNA-decapping enzyme 1A protein (303-582AA)
<b>Raised In</b>	Rabbit
<b>Species Reactivity</b>	Human
<b>Tested Applications</b>	ELISA, WB, IHC; Recommended dilution: WB:1:1000-1:5000, IHC:1:20-1:200
<b>Form</b>	Liquid
<b>Conjugate</b>	Non-conjugated
<b>Storage Buffer</b>	PBS with 0.02% sodium azide, 50% glycerol, pH7.3.
<b>Purification Method</b>	Antigen Affinity Purified
<b>Isotype</b>	IgG
<b>Clonality</b>	Polyclonal
<b>Alias</b>	mRNA-decapping enzyme 1A (EC 3.-.-.) (Smad4-interacting transcriptional co-activator) (Transcription factor SMIF), DCP1A, SMIF
<b>Immunogen Species</b>	Homo sapiens (Human)
<b>Research Area</b>	Epigenetics and Nuclear Signaling
<b>Target Names</b>	DCP1A

## Image



### Western blot

All lanes: DCP1A antibody at 3.79µg/ml

Lane 1: Jurkat whole cell lysate

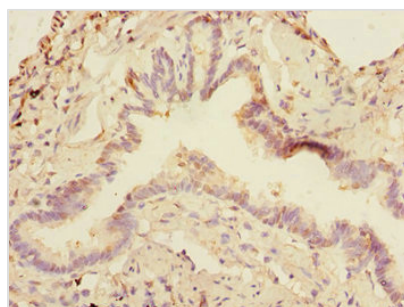
Lane 2: HepG2 whole cell lysate

Secondary

Goat polyclonal to rabbit IgG at 1/10000 dilution

Predicted band size: 64, 60 kDa

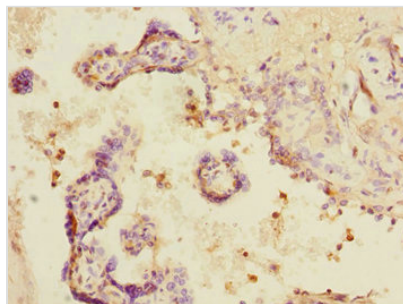
Observed band size: 64, 40 kDa



Immunohistochemistry of paraffin-embedded

human lung tissue using CSB-

PA885684ESR1HU at dilution of 1:100



Immunohistochemistry of paraffin-embedded human placenta tissue using CSB-PA885684ESR1HU at dilution of 1:100

**Usage**

For Research Use Only. Not for use in diagnostic or therapeutic procedures.