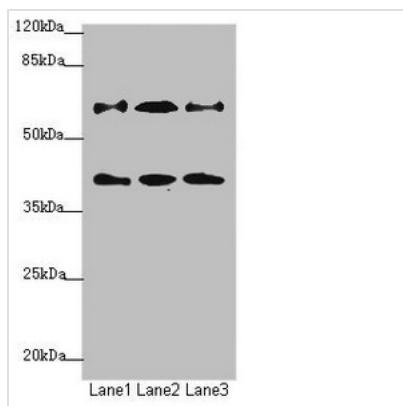




DCP1A Antibody

Product Code	CSB-PA885684ESR2HU
Storage	Upon receipt, store at -20°C or -80°C. Avoid repeated freeze.
Uniprot No.	Q9NPI6
Immunogen	Recombinant Human mRNA-decapping enzyme 1A protein (303-582AA)
Raised In	Rabbit
Species Reactivity	Human
Tested Applications	ELISA, WB, IHC; Recommended dilution: WB:1:1000-1:5000, IHC:1:20-1:200
Form	Liquid
Conjugate	Non-conjugated
Storage Buffer	PBS with 0.02% sodium azide, 50% glycerol, pH7.3.
Purification Method	Antigen Affinity Purified
Isotype	IgG
Clonality	Polyclonal
Alias	mRNA-decapping enzyme 1A (EC 3.-.-) (Smad4-interacting transcriptional co-activator) (Transcription factor SMIF), DCP1A, SMIF
Immunogen Species	Homo sapiens (Human)
Research Area	Epigenetics and Nuclear Signaling
Target Names	DCP1A

Image



Western blot

All lanes: DCP1A antibody at 1.23µg/ml

Lane 1: Jurkat whole cell lysate

Lane 2: 293T whole cell lysate

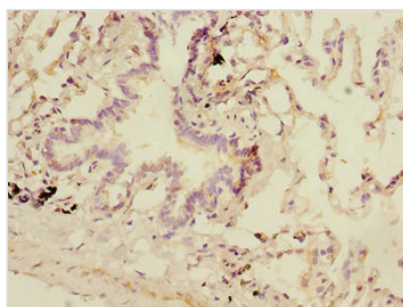
Lane 3: HepG2 whole cell lysate

Secondary

Goat polyclonal to rabbit IgG at 1/10000 dilution

Predicted band size: 64, 60 kDa

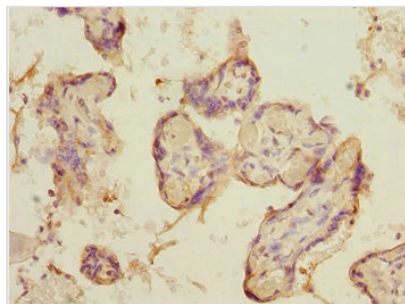
Observed band size: 64, 40 kDa



Immunohistochemistry of paraffin-embedded

human lung tissue using CSB-

PA885684ESR2HU at dilution of 1:100



Immunohistochemistry of paraffin-embedded human placenta tissue using CSB-PA885684ESR2HU at dilution of 1:100

Usage

For Research Use Only. Not for use in diagnostic or therapeutic procedures.