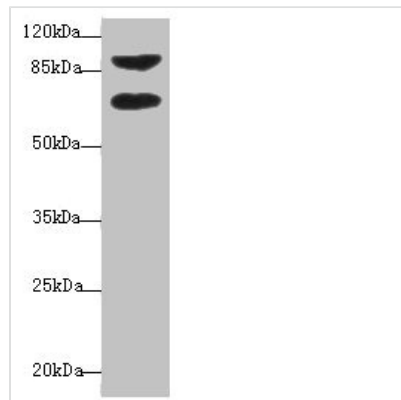




# DTX2 Antibody

|                            |   |
|----------------------------|---|
| <b>Product Code</b>        | CSB-PA803123ESR2HU  |
| <b>Storage</b>             | Upon receipt, store at -20°C or -80°C. Avoid repeated freeze.   |
| <b>Uniprot No.</b>         | Q86UW9  |
| <b>Immunogen</b>           | Recombinant Human Probable E3 ubiquitin-protein ligase DTX2 protein (1-280AA)   |
| <b>Raised In</b>           | Rabbit  |
| <b>Species Reactivity</b>  | Human   |
| <b>Tested Applications</b> | ELISA, WB, IHC; Recommended dilution: WB:1:1000-1:5000, IHC:1:20-1:200  |
| <b>Form</b>                | Liquid  |
| <b>Conjugate</b>           | Non-conjugated  |
| <b>Storage Buffer</b>      | PBS with 0.02% sodium azide, 50% glycerol, pH7.3.   |
| <b>Purification Method</b> | Antigen Affinity Purified   |
| <b>Isotype</b>             | IgG   |
| <b>Clonality</b>           | Polyclonal  |
| <b>Alias</b>               | Probable E3 ubiquitin-protein ligase DTX2 (EC 2.3.2.27) (Protein deltex-2) (Deltex2) (hDTX2) (RING finger protein 58) (RING-type E3 ubiquitin transferase DTX2), DTX2, KIAA1528 RNF58 |
| <b>Immunogen Species</b>   | Homo sapiens (Human)  |
| <b>Research Area</b>       | Stem Cells  |
| <b>Target Names</b>        | DTX2  |

## Image



Western blot

All lanes: DTX2 antibody at 1µg/ml + HepG2

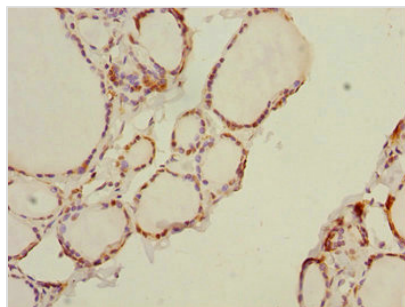
whole cell lysate

Secondary

Goat polyclonal to rabbit IgG at 1/10000 dilution

Predicted band size: 68, 63 kDa

Observed band size: 68, 92 kDa



Immunohistochemistry of paraffin-embedded human thyroid tissue using CSB-PA803123ESR2HU at dilution of 1:100

---

**Usage**

For Research Use Only. Not for use in diagnostic or therapeutic procedures.