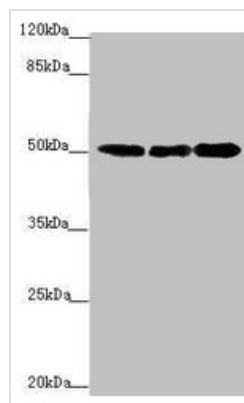




EEF1A2 Antibody

Product Code	CSB-PA007412ESR1HU
Storage	Upon receipt, store at -20°C or -80°C. Avoid repeated freeze.
Uniprot No.	Q05639
Immunogen	Recombinant Human Elongation factor 1-alpha 2 protein (184-463AA)
Raised In	Rabbit
Species Reactivity	Human
Tested Applications	ELISA, WB, IHC; Recommended dilution: WB:1:1000-1:5000, IHC:1:20-1:200
Form	Liquid
Conjugate	Non-conjugated
Storage Buffer	PBS with 0.02% sodium azide, 50% glycerol, pH7.3.
Purification Method	Antigen Affinity Purified
Isotype	IgG
Clonality	Polyclonal
Alias	Elongation factor 1-alpha 2 (EF-1-alpha-2) (Eukaryotic elongation factor 1 A-2) (eEF1A-2) (Statin-S1), EEF1A2, EEF1AL STN
Immunogen Species	Homo sapiens (Human)
Research Area	Epigenetics and Nuclear Signaling
Target Names	EEF1A2

Image



Western blot

All lanes: EEF1A2 antibody at 2.23µg/ml

Lane 1: MCF-7 whole cell lysate

Lane 2: HeLa whole cell lysate

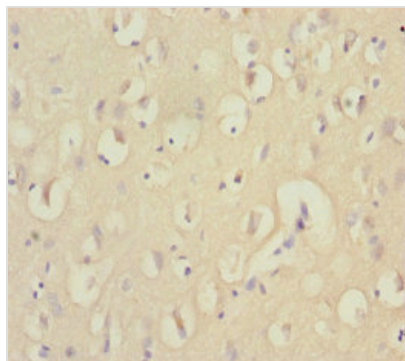
Lane 3: Raji whole cell lysate

Secondary

Goat polyclonal to rabbit IgG at 1/10000 dilution

Predicted band size: 50 kDa

Observed band size: 50 kDa



Immunohistochemistry of paraffin-embedded human brain tissue using CSB-PA007412ESR1HU at dilution of 1:100

Usage

For Research Use Only. Not for use in diagnostic or therapeutic procedures.