



EEF1A2 Antibody

| | |
|----------------------------|---|
| Product Code | CSB-PA007412ESR2HU |
| Storage | Upon receipt, store at -20°C or -80°C. Avoid repeated freeze. |
| Uniprot No. | Q05639 |
| Immunogen | Recombinant Human Elongation factor 1-alpha 2 protein (184-463AA) |
| Raised In | Rabbit |
| Species Reactivity | Human |
| Tested Applications | ELISA, WB, IHC; Recommended dilution: WB:1:1000-1:5000, IHC:1:20-1:200 |
| Form | Liquid |
| Conjugate | Non-conjugated |
| Storage Buffer | PBS with 0.02% sodium azide, 50% glycerol, pH7.3. |
| Purification Method | Antigen Affinity Purified |
| Isotype | IgG |
| Clonality | Polyclonal |
| Alias | Elongation factor 1-alpha 2 (EF-1-alpha-2) (Eukaryotic elongation factor 1 A-2) (eEF1A-2) (Statin-S1), EEF1A2, EEF1AL STN |
| Immunogen Species | Homo sapiens (Human) |
| Research Area | Epigenetics and Nuclear Signaling |
| Target Names | EEF1A2 |

Image



Western blot

All lanes: EEF1A2 antibody at 1.46µg/ml

Lane 1: MCF-7 whole cell lysate

Lane 2: Hela whole cell lysate

Lane 3: Raji whole cell lysate

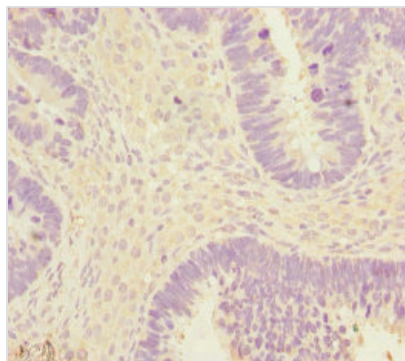
Lane 4: A431 whole cell lysate

Secondary

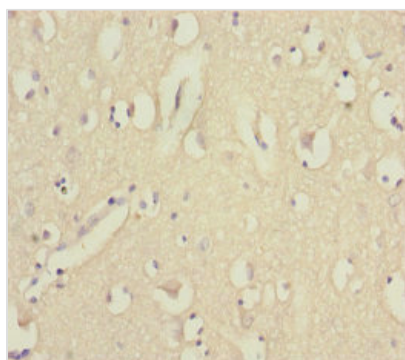
Goat polyclonal to rabbit IgG at 1/10000 dilution

Predicted band size: 50 kDa

Observed band size: 50 kDa



Immunohistochemistry of paraffin-embedded human ovarian cancer using CSB-PA007412ESR2HU at dilution of 1:100



Immunohistochemistry of paraffin-embedded human brain tissue using CSB-PA007412ESR2HU at dilution of 1:100

Usage

For Research Use Only. Not for use in diagnostic or therapeutic procedures.