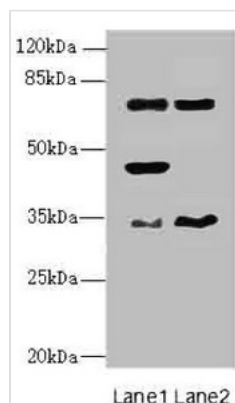




# EHF Antibody

|                            |  |
|----------------------------|--|
| <b>Product Code</b>        | CSB-PA007494ESR1HU   |
| <b>Storage</b>             | Upon receipt, store at -20°C or -80°C. Avoid repeated freeze.  |
| <b>Uniprot No.</b>         | Q9NZC4   |
| <b>Immunogen</b>           | Recombinant Human ETS homologous factor protein (1-210AA)  |
| <b>Raised In</b>           | Rabbit   |
| <b>Species Reactivity</b>  | Human, Mouse   |
| <b>Tested Applications</b> | ELISA, WB, IHC; Recommended dilution: WB:1:1000-1:5000, IHC:1:20-1:200   |
| <b>Form</b>                | Liquid   |
| <b>Conjugate</b>           | Non-conjugated   |
| <b>Storage Buffer</b>      | PBS with 0.02% sodium azide, 50% glycerol, pH7.3.  |
| <b>Purification Method</b> | Antigen Affinity Purified  |
| <b>Isotype</b>             | IgG  |
| <b>Clonality</b>           | Polyclonal   |
| <b>Alias</b>               | ETS homologous factor (hEHF) (ETS domain-containing transcription factor) (Epithelium-specific Ets transcription factor 3) (ESE-3), EHF, ESE3 ESE3B ESEJ |
| <b>Immunogen Species</b>   | Homo sapiens (Human)   |
| <b>Research Area</b>       | Epigenetics and Nuclear Signaling  |
| <b>Target Names</b>        | EHF  |

## Image



### Western blot

All lanes: EHF antibody at 4.95µg/ml

Lane 1: Mouse brain tissue

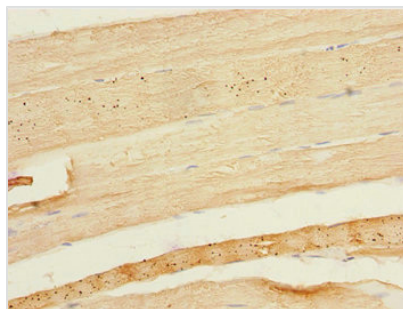
Lane 2: Mouse lung tissue

Secondary

Goat polyclonal to rabbit IgG at 1/10000 dilution

Predicted band size: 35, 33, 38 kDa

Observed band size: 35, 45, 63 kDa



Immunohistochemistry of paraffin-embedded human skeletal muscle tissue using CSB-PA007494ESR1HU at dilution of 1:100