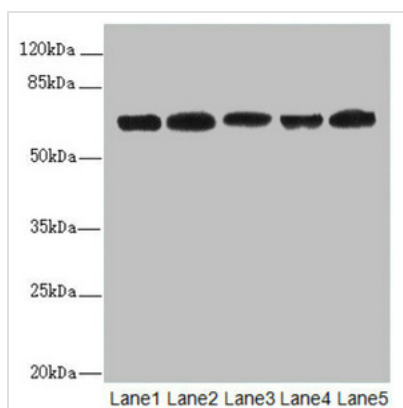




ELF2 Antibody

Product Code	CSB-PA618015DSR2HU
Storage	Upon receipt, store at -20°C or -80°C. Avoid repeated freeze.
Uniprot No.	Q15723
Immunogen	Recombinant Human ETS-related transcription factor Elf-2 protein (1-140AA)
Raised In	Rabbit
Species Reactivity	Human
Tested Applications	ELISA, WB, IHC; Recommended dilution: WB:1:1000-1:5000, IHC:1:20-1:200
Form	Liquid
Conjugate	Non-conjugated
Storage Buffer	PBS with 0.02% sodium azide, 50% glycerol, pH7.3.
Purification Method	Antigen Affinity Purified
Isotype	IgG
Clonality	Polyclonal
Alias	ETS-related transcription factor Elf-2 (E74-like factor 2) (New ETS-related factor), ELF2, NERF
Immunogen Species	Homo sapiens (Human)
Research Area	Epigenetics and Nuclear Signaling
Target Names	ELF2

Image



Western blot

All lanes: ELF2 antibody at 2.27µg/ml

Lane 1: HL60 whole cell lysate

Lane 2: A549 whole cell lysate

Lane 3: MCF-7 whole cell lysate

Lane 4: Jurkat whole cell lysate

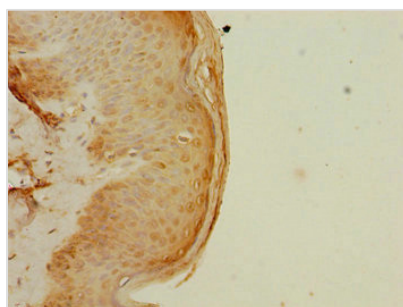
Lane 5: Hela whole cell lysate

Secondary

Goat polyclonal to rabbit IgG at 1/10000 dilution

Predicted band size: 64, 63, 57, 58, 55 kDa

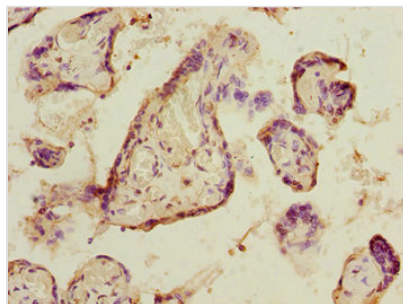
Observed band size: 64, 50 kDa



Immunohistochemistry of paraffin-embedded

human skin tissue using CSB-

PA618015DSR2HU at dilution of 1:100



Immunohistochemistry of paraffin-embedded human placenta tissue using CSB-PA618015DSR2HU at dilution of 1:100

Usage

For Research Use Only. Not for use in diagnostic or therapeutic procedures.