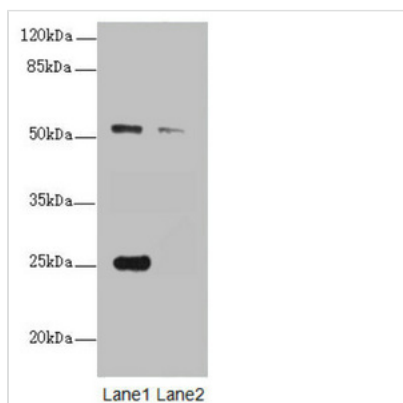




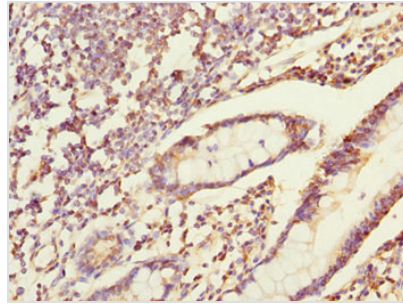
ERO1A Antibody

Product Code	CSB-PA846631ESR2HU
Storage	Upon receipt, store at -20°C or -80°C. Avoid repeated freeze.
Uniprot No.	Q96HE7
Immunogen	Recombinant Human ERO1-like protein alpha protein (24-260AA)
Raised In	Rabbit
Species Reactivity	Human
Tested Applications	ELISA, WB, IHC; Recommended dilution: WB:1:1000-1:5000, IHC:1:20-1:200
Form	Liquid
Conjugate	Non-conjugated
Storage Buffer	PBS with 0.02% sodium azide, 50% glycerol, pH7.3.
Purification Method	Antigen Affinity Purified
Isotype	IgG
Clonality	Polyclonal
Alias	ERO1-like protein alpha (ERO1-L) (ERO1-L-alpha) (EC 1.8.4.-) (Endoplasmic oxidoreductin-1-like protein) (Endoplasmic reticulum oxidoreductase alpha) (Oxidoreductin-1-L-alpha), ERO1A, ERO1L
Immunogen Species	Homo sapiens (Human)
Research Area	Signal Transduction
Target Names	ERO1A

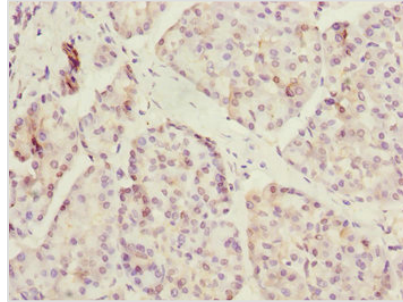
Image



Western blot
 All lanes: ERO1L antibody at 1.25µg/ml
 Lane 1: A431 whole cell lysate
 Lane 2: 293T whole cell lysate
 Secondary
 Goat polyclonal to rabbit IgG at 1/10000 dilution
 Predicted band size: 54 kDa
 Observed band size: 54, 25 kDa



Immunohistochemistry of paraffin-embedded human small intestine tissue using CSB-PA846631ESR2HU at dilution of 1:100



Immunohistochemistry of paraffin-embedded human pancreatic tissue using CSB-PA846631ESR2HU at dilution of 1:100

Usage

For Research Use Only. Not for use in diagnostic or therapeutic procedures.