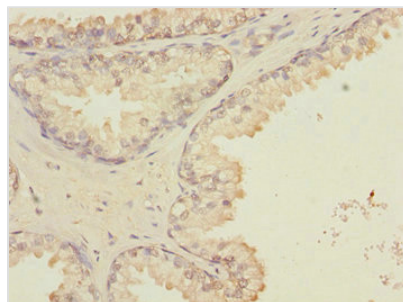




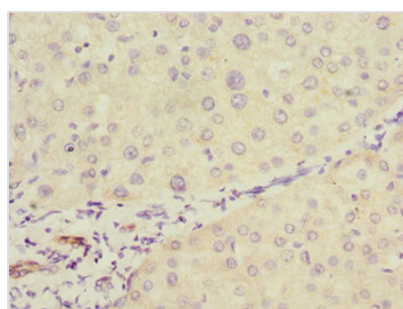
# GTF2A2 Antibody

<b>Product Code</b>	CSB-PA010000ESR2HU
<b>Storage</b>	Upon receipt, store at -20°C or -80°C. Avoid repeated freeze.
<b>Uniprot No.</b>	P52657
<b>Immunogen</b>	Recombinant Human Transcription initiation factor IIA subunit 2 protein (1-109AA)
<b>Raised In</b>	Rabbit
<b>Species Reactivity</b>	Human
<b>Tested Applications</b>	ELISA, IHC; Recommended dilution: IHC:1:20-1:200
<b>Form</b>	Liquid
<b>Conjugate</b>	Non-conjugated
<b>Storage Buffer</b>	PBS with 0.02% sodium azide, 50% glycerol, pH7.3.
<b>Purification Method</b>	Antigen Affinity Purified
<b>Isotype</b>	IgG
<b>Clonality</b>	Polyclonal
<b>Alias</b>	Transcription initiation factor IIA subunit 2 (General transcription factor IIA subunit 2) (TFIIA p12 subunit) (TFIIA-12) (TFIIAS) (Transcription initiation factor IIA gamma chain) (TFIIA-gamma), GTF2A2, TF2A2
<b>Immunogen Species</b>	Homo sapiens (Human)
<b>Research Area</b>	Epigenetics and Nuclear Signaling
<b>Target Names</b>	GTF2A2

## Image



Immunohistochemistry of paraffin-embedded human prostate cancer using CSB-PA010000ESR2HU at dilution of 1:100



Immunohistochemistry of paraffin-embedded human liver cancer using CSB-PA010000ESR2HU at dilution of 1:100



---

**Usage**

For Research Use Only. Not for use in diagnostic or therapeutic procedures.