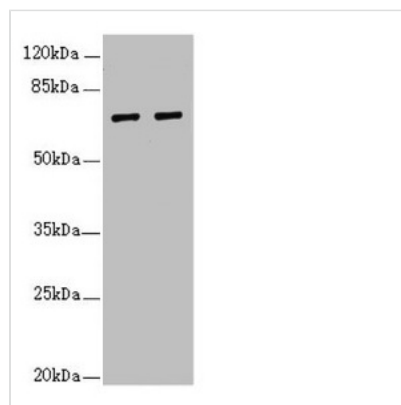




IWS1 Antibody

Product Code	CSB-PA822304ESR1HU
Storage	Upon receipt, store at -20°C or -80°C. Avoid repeated freeze.
Uniprot No.	Q96ST2
Immunogen	Recombinant Human Protein IWS1 homolog protein (570-819AA)
Raised In	Rabbit
Species Reactivity	Human
Tested Applications	ELISA, WB, IHC; Recommended dilution: WB:1:1000-1:5000, IHC:1:20-1:200
Form	Liquid
Conjugate	Non-conjugated
Storage Buffer	PBS with 0.02% sodium azide, 50% glycerol, pH7.3.
Purification Method	Antigen Affinity Purified
Isotype	IgG
Clonality	Polyclonal
Alias	Protein IWS1 homolog (IWS1-like protein), IWS1, IWS1L
Immunogen Species	Homo sapiens (Human)
Research Area	Epigenetics and Nuclear Signaling
Target Names	IWS1

Image



Western blot

All lanes: IWS1 antibody at 3.84µg/ml

Lane 1: 293T whole cell lysate

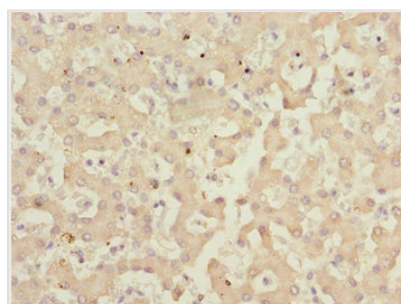
Lane 2: Jurkat whole cell lysate

Secondary

Goat polyclonal to rabbit IgG at 1/10000 dilution

Predicted band size: 92, 57, 70 kDa

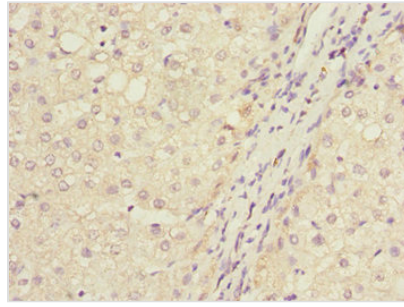
Observed band size: 70 kDa



Immunohistochemistry of paraffin-embedded

human liver tissue using CSB-

PA822304ESR1HU at dilution of 1:100



Immunohistochemistry of paraffin-embedded human liver cancer using CSB-PA822304ESR1HU at dilution of 1:100

Usage

For Research Use Only. Not for use in diagnostic or therapeutic procedures.