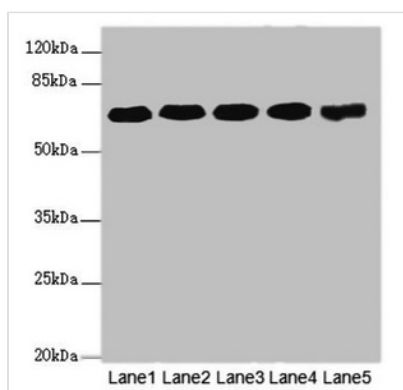




KPNA6 Antibody

Product Code	CSB-PA012488ESR1HU
Storage	Upon receipt, store at -20°C or -80°C. Avoid repeated freeze.
Uniprot No.	O60684
Immunogen	Recombinant Human Importin subunit alpha-7 protein (277-536AA)
Raised In	Rabbit
Species Reactivity	Human, Mouse
Tested Applications	ELISA, WB, IHC; Recommended dilution: WB:1:1000-1:5000, IHC:1:20-1:200
Form	Liquid
Conjugate	Non-conjugated
Storage Buffer	PBS with 0.02% sodium azide, 50% glycerol, pH7.3.
Purification Method	Antigen Affinity Purified
Isotype	IgG
Clonality	Polyclonal
Alias	Importin subunit alpha-7 (Karyopherin subunit alpha-6), KPNA6, IPOA7
Immunogen Species	Homo sapiens (Human)
Research Area	Signal Transduction
Target Names	KPNA6

Image



Western blot

All lanes: KPNA6 antibody at 4.25µg/ml

Lane 1: PC-3 whole cell lysate

Lane 2: HeLa whole cell lysate

Lane 3: U251 whole cell lysate

Lane 4: 293T whole cell lysate

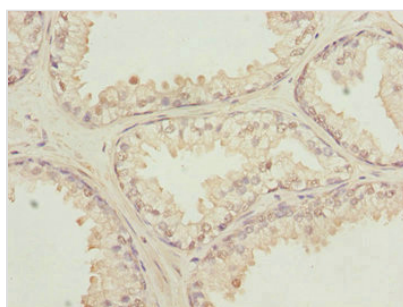
Lane 5: Mouse brain tissue

Secondary

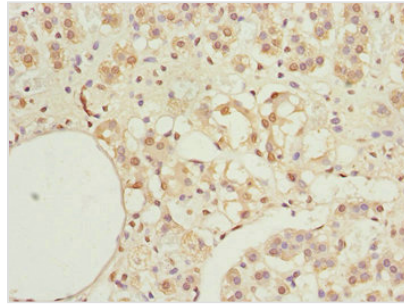
Goat polyclonal to rabbit IgG at 1/10000 dilution

Predicted band size: 60 kDa

Observed band size: 60 kDa



Immunohistochemistry of paraffin-embedded human prostate cancer using CSB-PA012488ESR1HU at dilution of 1:100



Immunohistochemistry of paraffin-embedded human adrenal gland tissue using CSB-PA012488ESR1HU at dilution of 1:100

Usage

For Research Use Only. Not for use in diagnostic or therapeutic procedures.