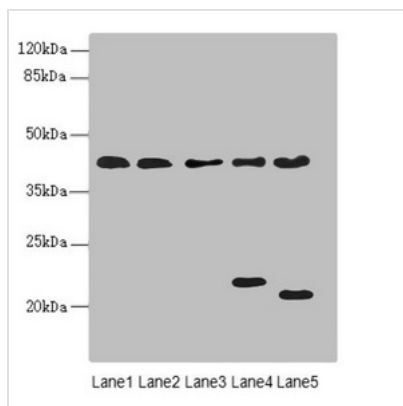




LHX6 Antibody

Product Code	CSB-PA891795ESR1HU
Storage	Upon receipt, store at -20°C or -80°C. Avoid repeated freeze.
Uniprot No.	Q9UPM6
Immunogen	Recombinant Human LIM/homeobox protein Lhx6 protein (114-363AA)
Raised In	Rabbit
Species Reactivity	Human, Mouse
Tested Applications	ELISA, WB, IHC; Recommended dilution: WB:1:1000-1:5000, IHC:1:20-1:200
Form	Liquid
Conjugate	Non-conjugated
Storage Buffer	PBS with 0.02% sodium azide, 50% glycerol, pH7.3.
Purification Method	Antigen Affinity Purified
Isotype	IgG
Clonality	Polyclonal
Alias	LIM/homeobox protein Lhx6 (LIM homeobox protein 6) (LIM/homeobox protein Lhx6.1), LHX6, LHX6.1
Immunogen Species	Homo sapiens (Human)
Research Area	Cell Biology
Target Names	LHX6

Image



Western blot

All lanes: LHX6 antibody at 3.02µg/ml

Lane 1: HepG2 whole cell lysate

Lane 2: U87 whole cell lysate

Lane 3: NIH/3T3 whole cell lysate

Lane 4: Mouse brain tissue

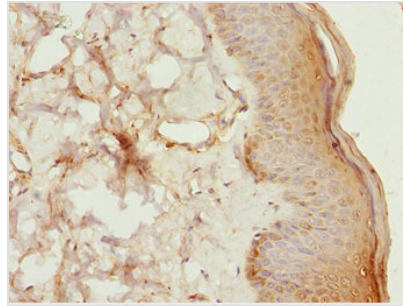
Lane 5: Mouse liver tissue

Secondary

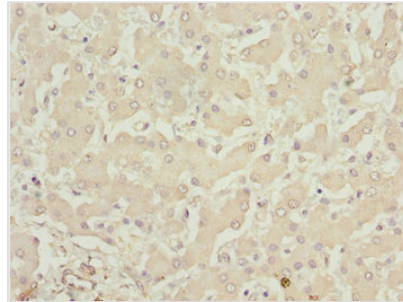
Goat polyclonal to rabbit IgG at 1/10000 dilution

Predicted band size: 41, 39, 44, 42, 20 kDa

Observed band size: 41, 22, 20 kDa



Immunohistochemistry of paraffin-embedded human skin tissue using CSB-PA891795ESR1HU at dilution of 1:100



Immunohistochemistry of paraffin-embedded human liver tissue using CSB-PA891795ESR1HU at dilution of 1:100

Usage

For Research Use Only. Not for use in diagnostic or therapeutic procedures.