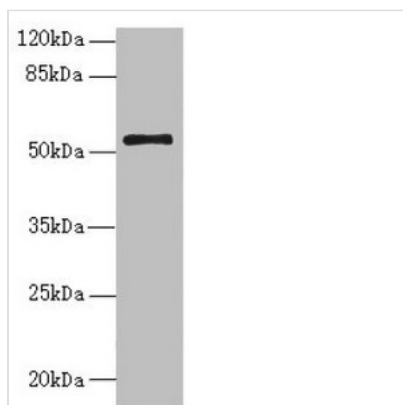




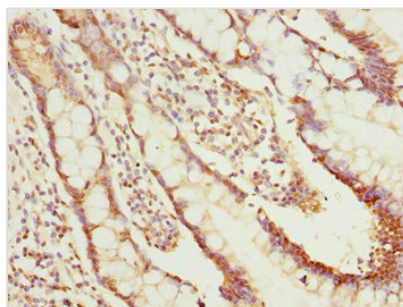
# NLE1 Antibody

<b>Product Code</b>	CSB-PA889125ESR2HU
<b>Storage</b>	Upon receipt, store at -20°C or -80°C. Avoid repeated freeze.
<b>Uniprot No.</b>	Q9NVX2
<b>Immunogen</b>	Recombinant Human Notchless protein homolog 1 protein (206-485AA)
<b>Raised In</b>	Rabbit
<b>Species Reactivity</b>	Human
<b>Tested Applications</b>	ELISA, WB, IHC; Recommended dilution: WB:1:1000-1:5000, IHC:1:20-1:200
<b>Form</b>	Liquid
<b>Conjugate</b>	Non-conjugated
<b>Storage Buffer</b>	PBS with 0.02% sodium azide, 50% glycerol, pH7.3.
<b>Purification Method</b>	Antigen Affinity Purified
<b>Isotype</b>	IgG
<b>Clonality</b>	Polyclonal
<b>Alias</b>	Notchless protein homolog 1, NLE1
<b>Immunogen Species</b>	Homo sapiens (Human)
<b>Research Area</b>	Stem Cells
<b>Target Names</b>	NLE1

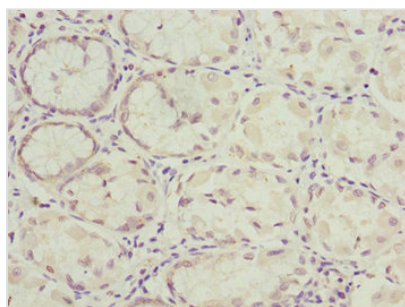
## Image



Western blot  
 All lanes: NLE1 antibody at 1.48µg/ml + PC-3 whole cell lysate  
 Secondary  
 Goat polyclonal to rabbit IgG at 1/10000 dilution  
 Predicted band size: 54, 22 kDa  
 Observed band size: 54 kDa



Immunohistochemistry of paraffin-embedded human small intestine tissue using CSB-PA889125ESR2HU at dilution of 1:100



Immunohistochemistry of paraffin-embedded human gastric cancer using CSB-PA889125ESR2HU at dilution of 1:100

---

**Usage**

For Research Use Only. Not for use in diagnostic or therapeutic procedures.