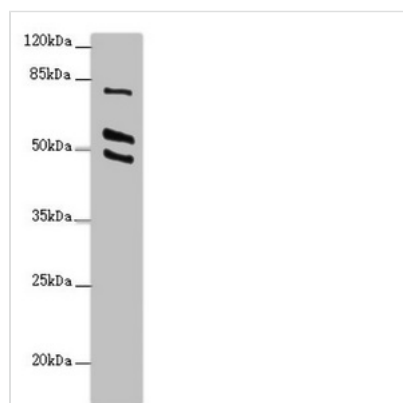




RUFY2 Antibody

Product Code	CSB-PA848835ESR2HU
Storage	Upon receipt, store at -20°C or -80°C. Avoid repeated freeze.
Uniprot No.	Q8WXA3
Immunogen	Recombinant Human RUN and FYVE domain-containing protein 2 protein (396-655AA)
Raised In	Rabbit
Species Reactivity	Human
Tested Applications	ELISA, WB, IHC; Recommended dilution: WB:1:1000-1:5000, IHC:1:20-1:200
Form	Liquid
Conjugate	Non-conjugated
Storage Buffer	PBS with 0.02% sodium azide, 50% glycerol, pH7.3.
Purification Method	Antigen Affinity Purified
Isotype	IgG
Clonality	Polyclonal
Alias	RUN and FYVE domain-containing protein 2 (Rab4-interacting protein related), RUFY2, KIAA1537 RABIP4R
Immunogen Species	Homo sapiens (Human)
Research Area	Others
Target Names	RUFY2

Image



Western blot

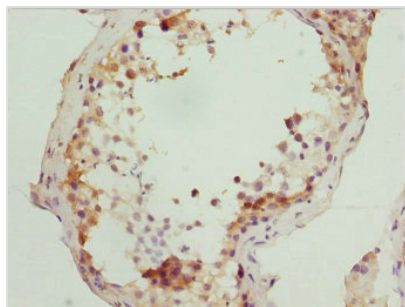
All lanes: RUFY2 antibody at 2.4µg/ml + PC-3 whole cell lysate

Secondary

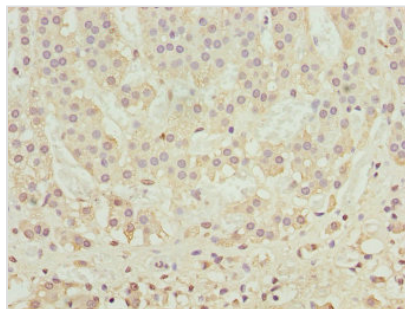
Goat polyclonal to rabbit IgG at 1/10000 dilution

Predicted band size: 76, 71, 75, 47, 44 kDa

Observed band size: 76, 55, 49 kDa



Immunohistochemistry of paraffin-embedded human testis tissue using CSB-PA848835ESR2HU at dilution of 1:100



Immunohistochemistry of paraffin-embedded human adrenal gland tissue using CSB-PA848835ESR2HU at dilution of 1:100

Usage

For Research Use Only. Not for use in diagnostic or therapeutic procedures.