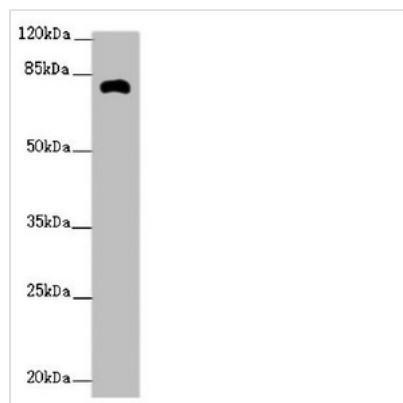




ZFYVE1 Antibody

Product Code	CSB-PA064019ESR2HU
Storage	Upon receipt, store at -20°C or -80°C. Avoid repeated freeze.
Uniprot No.	Q9HBF4
Immunogen	Recombinant Human Zinc finger FYVE domain-containing protein 1 protein (1-280AA)
Raised In	Rabbit
Species Reactivity	Human, Mouse
Tested Applications	ELISA, WB, IHC; Recommended dilution: WB:1:1000-1:5000, IHC:1:20-1:200
Form	Liquid
Conjugate	Non-conjugated
Storage Buffer	PBS with 0.02% sodium azide, 50% glycerol, pH7.3.
Purification Method	Antigen Affinity Purified
Isotype	IgG
Clonality	Polyclonal
Alias	Zinc finger FYVE domain-containing protein 1 (Double FYVE-containing protein 1) (SR3) (Tandem FYVE fingers-1), ZFYVE1, DFCP1 KIAA1589 TAFF1 ZNFN2A1
Immunogen Species	Homo sapiens (Human)
Research Area	Signal Transduction
Target Names	ZFYVE1

Image



Western blot

All lanes: ZFYVE1 antibody at 2.62μg/ml +

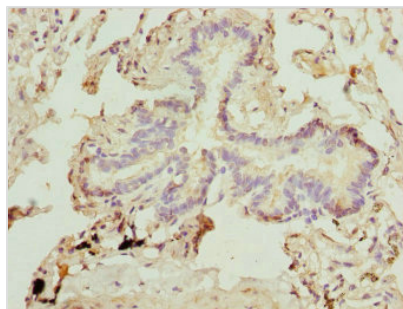
Mouse kidney tissue

Secondary

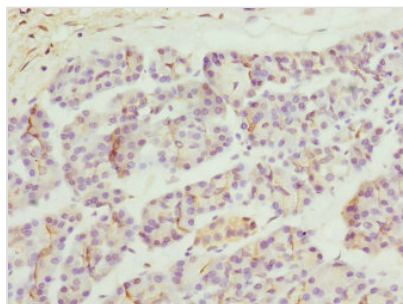
Goat polyclonal to rabbit IgG at 1/10000 dilution

Predicted band size: 88, 41, 86 kDa

Observed band size: 81 kDa



Immunohistochemistry of paraffin-embedded human lung tissue using CSB-PA064019ESR2HU at dilution of 1:100



Immunohistochemistry of paraffin-embedded human pancreatic tissue using CSB-PA064019ESR2HU at dilution of 1:100