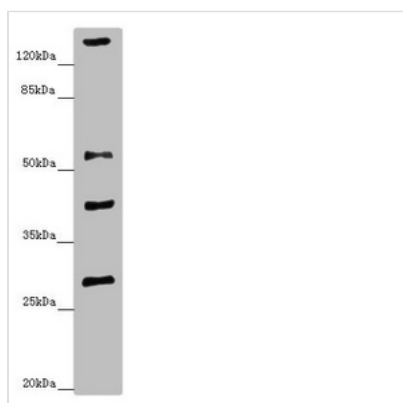




# ZSCAN26 Antibody

<b>Product Code</b>	CSB-PA026565ESR2HU
<b>Storage</b>	Upon receipt, store at -20°C or -80°C. Avoid repeated freeze.
<b>Uniprot No.</b>	Q16670
<b>Immunogen</b>	Recombinant Human Zinc finger and SCAN domain-containing protein 26 protein (239-478AA)
<b>Raised In</b>	Rabbit
<b>Species Reactivity</b>	Human, Mouse
<b>Tested Applications</b>	ELISA, WB, IHC; Recommended dilution: WB:1:1000-1:5000, IHC:1:20-1:200
<b>Form</b>	Liquid
<b>Conjugate</b>	Non-conjugated
<b>Storage Buffer</b>	PBS with 0.02% sodium azide, 50% glycerol, pH7.3.
<b>Purification Method</b>	Antigen Affinity Purified
<b>Isotype</b>	IgG
<b>Clonality</b>	Polyclonal
<b>Alias</b>	Zinc finger and SCAN domain-containing protein 26 (Protein SRE-ZBP) (Zinc finger protein 187), ZSCAN26, ZNF187
<b>Immunogen Species</b>	Homo sapiens (Human)
<b>Research Area</b>	Epigenetics and Nuclear Signaling
<b>Target Names</b>	ZSCAN26

## Image



Western blot

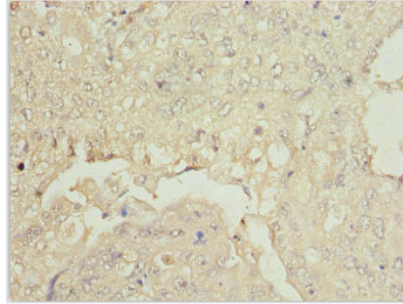
All lanes: ZSCAN26antibody at 1.34μg/ml +  
Mouse brain tissue

Secondary

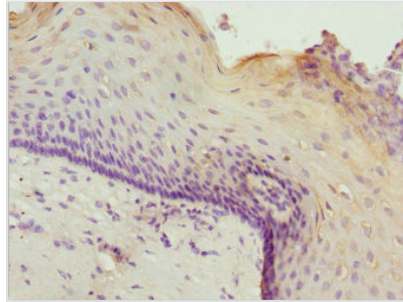
Goat polyclonal to rabbit IgG at 1/10000 dilution

Predicted band size: 56, 38 kDa

Observed band size: 56, 29, 40, 160 kDa



Immunohistochemistry of paraffin-embedded human lung cancer using CSB-PA026565ESR2HU at dilution of 1:100



Immunohistochemistry of paraffin-embedded human cervical cancer using CSB-PA026565ESR2HU at dilution of 1:100

## Usage

For Research Use Only. Not for use in diagnostic or therapeutic procedures.