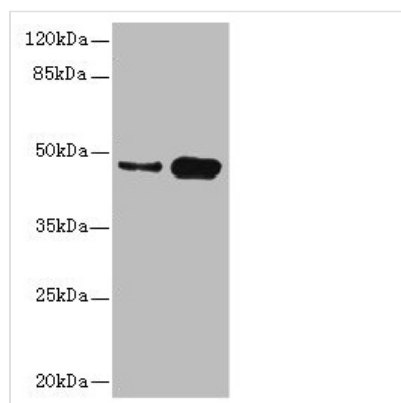




CSNK1G2 Antibody

Product Code	CSB-PA006070ESR2HU
Storage	Upon receipt, store at -20°C or -80°C. Avoid repeated freeze.
Uniprot No.	P78368
Immunogen	Recombinant Human Casein kinase I isoform gamma-2 protein (316-415AA)
Raised In	Rabbit
Species Reactivity	Human, Mouse
Tested Applications	ELISA, WB, IHC, IP; Recommended dilution: WB:1:1000-1:5000, IHC:1:20-1:200, IP:1:200-1:2000
Form	Liquid
Conjugate	Non-conjugated
Storage Buffer	PBS with 0.02% sodium azide, 50% glycerol, pH7.3.
Purification Method	Antigen Affinity Purified
Isotype	IgG
Clonality	Polyclonal
Alias	Casein kinase I isoform gamma-2 (CKI-gamma 2) (EC 2.7.11.1), CSNK1G2, CK1G2
Immunogen Species	Homo sapiens (Human)
Research Area	Signal Transduction
Target Names	CSNK1G2

Image



Western blot

All lanes: CSNK1G2 antibody at 4.21µg/ml

Lane 1: Mouse gonadal tissue

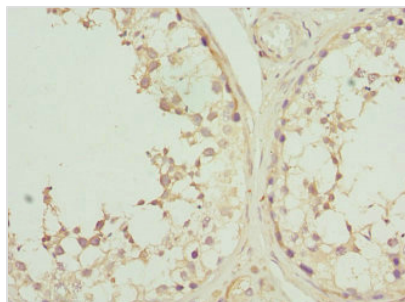
Lane 2: Hela whole cell lysate

Secondary

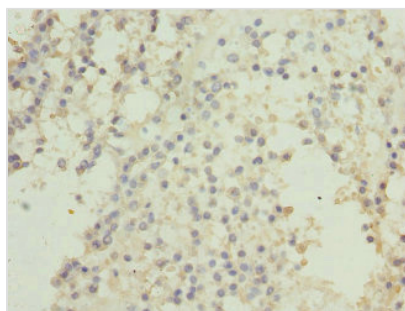
Goat polyclonal to rabbit IgG at 1/10000 dilution

Predicted band size: 47 kDa

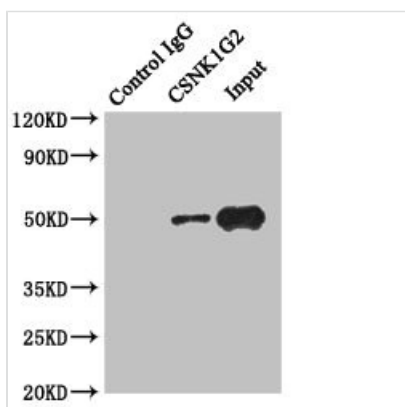
Observed band size: 47 kDa



Immunohistochemistry of paraffin-embedded human testis tissue using CSB-PA006070ESR2HU at dilution of 1:100



Immunohistochemistry of paraffin-embedded human breast cancer using CSB-PA006070ESR2HU at dilution of 1:100



Immunoprecipitating CSNK1G2 in HeLa whole cell lysate

Lane 1: Rabbit control IgG instead of (1 μ g) instead of CSB-PA006070ESR2HU in HeLa whole cell lysate. For western blotting, a HRP-conjugated anti-rabbit IgG, specific to the non-reduced form of IgG was used the Secondary antibody (1/50000)

Lane 2: CSB-PA006070ESR2HU (4 μ g) + HeLa whole cell lysate (500 μ g)

Lane 3: HeLa whole cell lysate (20 μ g)

Usage

For Research Use Only. Not for use in diagnostic or therapeutic procedures.