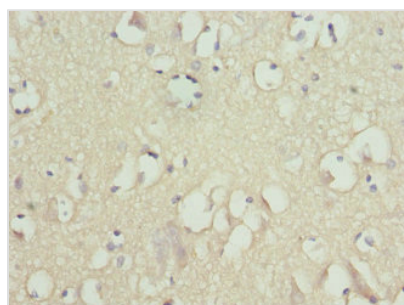




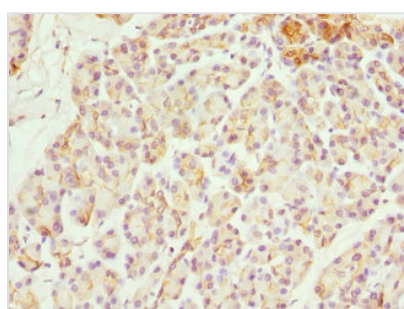
FXYD2 Antibody

Product Code	CSB-PA009090ESR1HU
Storage	Upon receipt, store at -20°C or -80°C. Avoid repeated freeze.
Uniprot No.	P54710
Immunogen	Recombinant Human Sodium/potassium-transporting ATPase subunit gamma protein (1-64AA)
Raised In	Rabbit
Species Reactivity	Human
Tested Applications	ELISA, IHC; Recommended dilution: IHC:1:20-1:200
Form	Liquid
Conjugate	Non-conjugated
Storage Buffer	PBS with 0.02% sodium azide, 50% glycerol, pH7.3.
Purification Method	Antigen Affinity Purified
Isotype	IgG
Clonality	Polyclonal
Alias	Sodium/potassium-transporting ATPase subunit gamma (Na(+)/K(+) ATPase subunit gamma) (FXYD domain-containing ion transport regulator 2) (Sodium pump gamma chain), FXYD2, ATP1C ATP1G1
Immunogen Species	Homo sapiens (Human)
Research Area	Neuroscience
Target Names	FXYD2

Image



Immunohistochemistry of paraffin-embedded human brain tissue using CSB-PA009090ESR1HU at dilution of 1:100



Immunohistochemistry of paraffin-embedded human pancreatic tissue using CSB-PA009090ESR1HU at dilution of 1:100



Usage

For Research Use Only. Not for use in diagnostic or therapeutic procedures.