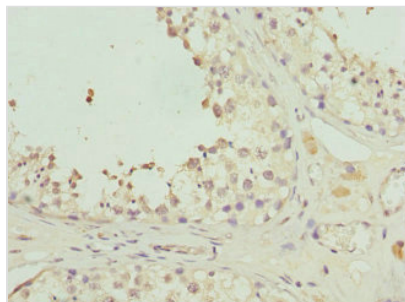




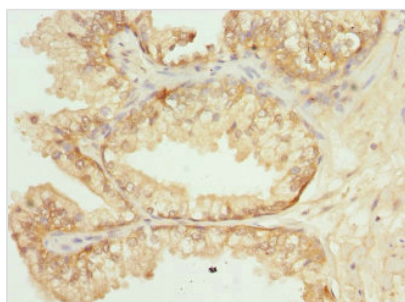
# GPR68 Antibody

<b>Product Code</b>	CSB-PA623012ESR1HU
<b>Storage</b>	Upon receipt, store at -20°C or -80°C. Avoid repeated freeze.
<b>Uniprot No.</b>	Q15743
<b>Immunogen</b>	Recombinant Human Ovarian cancer G-protein coupled receptor 1 protein (276-365AA)
<b>Raised In</b>	Rabbit
<b>Species Reactivity</b>	Human
<b>Tested Applications</b>	ELISA, IHC; Recommended dilution: IHC:1:20-1:200
<b>Form</b>	Liquid
<b>Conjugate</b>	Non-conjugated
<b>Storage Buffer</b>	PBS with 0.02% sodium azide, 50% glycerol, pH7.3.
<b>Purification Method</b>	Antigen Affinity Purified
<b>Isotype</b>	IgG
<b>Clonality</b>	Polyclonal
<b>Alias</b>	Ovarian cancer G-protein coupled receptor 1 (OGR-1) (G-protein coupled receptor 68) (GPR12A) (Sphingosylphosphorylcholine receptor), GPR68, OGR1
<b>Immunogen Species</b>	Homo sapiens (Human)
<b>Research Area</b>	Signal Transduction
<b>Target Names</b>	GPR68

## Image



Immunohistochemistry of paraffin-embedded human testis tissue using CSB-PA623012ESR1HU at dilution of 1:100



Immunohistochemistry of paraffin-embedded human prostate cancer using CSB-PA623012ESR1HU at dilution of 1:100



**Usage**

For Research Use Only. Not for use in diagnostic or therapeutic procedures.