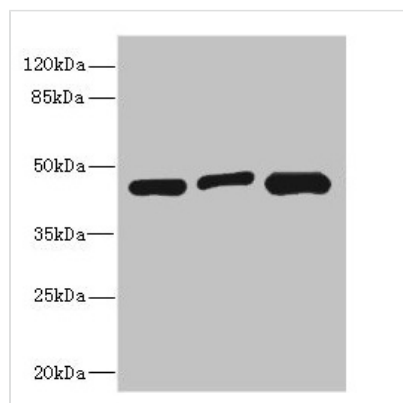




ITPK1 Antibody

Product Code	CSB-PA613412ESR2HU
Storage	Upon receipt, store at -20°C or -80°C. Avoid repeated freeze.
Uniprot No.	Q13572
Immunogen	Recombinant Human Inositol-tetrakisphosphate 1-kinase protein (185-414AA)
Raised In	Rabbit
Species Reactivity	Human
Tested Applications	ELISA, WB, IHC; Recommended dilution: WB:1:1000-1:5000, IHC:1:20-1:200
Form	Liquid
Conjugate	Non-conjugated
Storage Buffer	PBS with 0.02% sodium azide, 50% glycerol, pH7.3.
Purification Method	Antigen Affinity Purified
Isotype	IgG
Clonality	Polyclonal
Alias	Inositol-tetrakisphosphate 1-kinase (EC 2.7.1.134) (Inositol 1,3,4-trisphosphate 5/6-kinase) (Inositol-triphosphate 5/6-kinase) (Ins(1,3,4)P(3) 5/6-kinase) (EC 2.7.1.159), ITPK1
Immunogen Species	Homo sapiens (Human)
Research Area	Signal Transduction
Target Names	ITPK1

Image



Western blot

All lanes: ITPK1 antibody at 3.58µg/ml

Lane 1: Hela whole cell lysate

Lane 2: HepG2 whole cell lysate

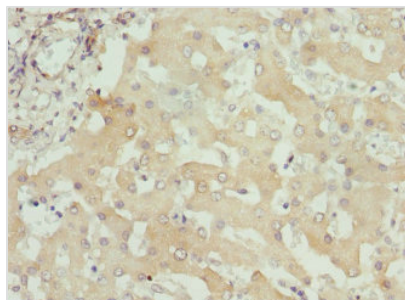
Lane 3: A431 whole cell lysate

Secondary

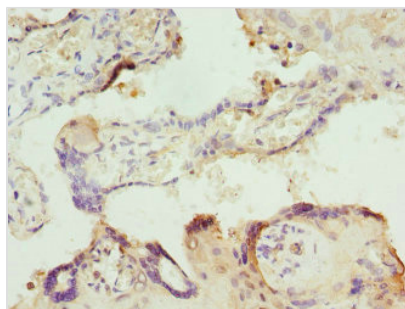
Goat polyclonal to rabbit IgG at 1/10000 dilution

Predicted band size: 46, 36 kDa

Observed band size: 46 kDa



Immunohistochemistry of paraffin-embedded human liver tissue using CSB-PA613412ESR2HU at dilution of 1:100



Immunohistochemistry of paraffin-embedded human placenta tissue using CSB-PA613412ESR2HU at dilution of 1:100

Usage

For Research Use Only. Not for use in diagnostic or therapeutic procedures.