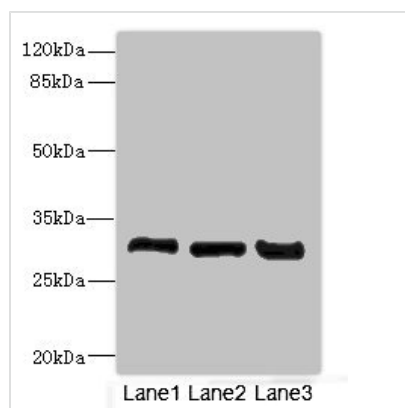




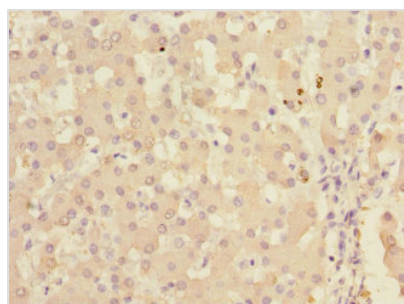
# KHK Antibody

<b>Product Code</b>	CSB-PA012157ESR1HU
<b>Storage</b>	Upon receipt, store at -20°C or -80°C. Avoid repeated freeze.
<b>Uniprot No.</b>	P50053
<b>Immunogen</b>	Recombinant Human Ketohexokinase protein (1-298AA)
<b>Raised In</b>	Rabbit
<b>Species Reactivity</b>	Human, Mouse, Rat
<b>Tested Applications</b>	ELISA, WB, IHC, IP; Recommended dilution: WB:1:1000-1:5000, IHC:1:20-1:200, IP:1:200-1:2000
<b>Form</b>	Liquid
<b>Conjugate</b>	Non-conjugated
<b>Storage Buffer</b>	PBS with 0.02% sodium azide, 50% glycerol, pH7.3.
<b>Purification Method</b>	Antigen Affinity Purified
<b>Isotype</b>	IgG
<b>Clonality</b>	Polyclonal
<b>Alias</b>	Ketohexokinase (EC 2.7.1.3) (Hepatic fructokinase), KHK
<b>Immunogen Species</b>	Homo sapiens (Human)
<b>Research Area</b>	Signal Transduction
<b>Target Names</b>	KHK

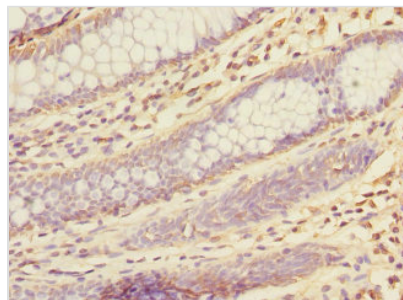
## Image



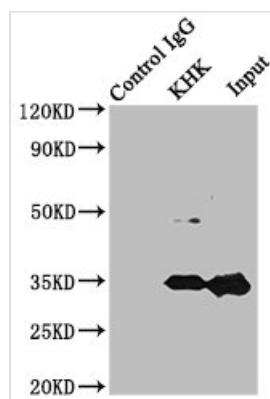
Western blot  
 All lanes: KHK antibody at 3.6µg/ml  
 Lane 1: Mouse liver tissue  
 Lane 2: Mouse kidney tissue  
 Lane 3: Rat kidney tissue  
 Secondary  
 Goat polyclonal to rabbit IgG at 1/10000 dilution  
 Predicted band size: 33 kDa  
 Observed band size: 33 kDa



Immunohistochemistry of paraffin-embedded human liver tissue using CSB-PA012157ESR1HU at dilution of 1:100



Immunohistochemistry of paraffin-embedded human colon cancer using CSB-PA012157ESR1HU at dilution of 1:100



Immunoprecipitating KHK in Mouse liver tissue  
Lane 1: Rabbit control IgG instead of CSB-PA012157ESR1HU in Mouse liver tissue. For western blotting, a HRP-conjugated Protein G antibody was used as the secondary antibody (1/2000)

Lane 2: CSB-PA012157ESR1HU (8μg) + Mouse liver tissue (500μg)

Lane 3: Mouse liver tissue (10μg)