



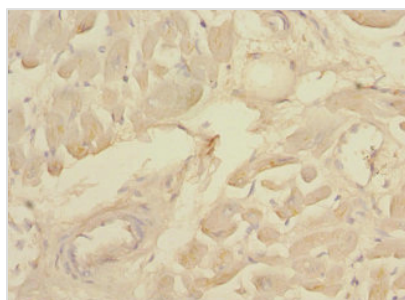
MAP4K3 Antibody

Product Code	CSB-PA013438ESR1HU
Storage	Upon receipt, store at -20°C or -80°C. Avoid repeated freeze.
Uniprot No.	Q8IVH8
Immunogen	Recombinant Human Mitogen-activated protein kinase kinase kinase kinase 3 protein (755-894AA)
Raised In	Rabbit
Species Reactivity	Human
Tested Applications	ELISA, IHC; Recommended dilution: IHC:1:20-1:200
Form	Liquid
Conjugate	Non-conjugated
Storage Buffer	PBS with 0.02% sodium azide, 50% glycerol, pH7.3.
Purification Method	Antigen Affinity Purified
Isotype	IgG
Clonality	Polyclonal
Alias	Mitogen-activated protein kinase kinase kinase kinase 3 (EC 2.7.11.1) (Germinal center kinase-related protein kinase) (GLK) (MAPK/ERK kinase kinase kinase 3) (MEK kinase kinase 3) (MEKKK 3), MAP4K3, RAB8IPL1
Immunogen Species	Homo sapiens (Human)
Research Area	Signal Transduction
Target Names	MAP4K3

Image



Immunohistochemistry of paraffin-embedded human skeletal muscle tissue using CSB-PA013438ESR1HU at dilution of 1:100



Immunohistochemistry of paraffin-embedded human heart tissue using CSB-PA013438ESR1HU at dilution of 1:100



Usage

For Research Use Only. Not for use in diagnostic or therapeutic procedures.