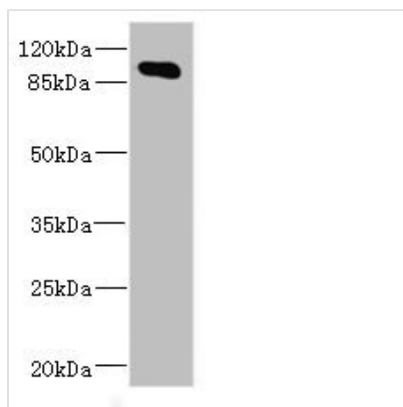




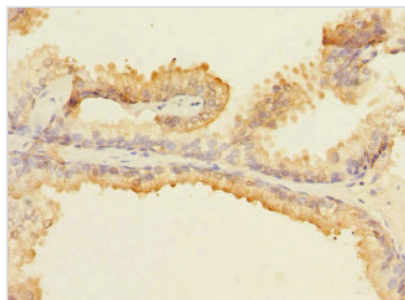
MAP4K5 Antibody

Product Code	CSB-PA013440DSR2HU
Storage	Upon receipt, store at -20°C or -80°C. Avoid repeated freeze.
Uniprot No.	Q9Y4K4
Immunogen	Recombinant Human Mitogen-activated protein kinase kinase kinase kinase 5 protein (300-480AA)
Raised In	Rabbit
Species Reactivity	Human, Mouse
Tested Applications	ELISA, WB, IHC; Recommended dilution: WB:1:1000-1:5000, IHC:1:20-1:200
Form	Liquid
Conjugate	Non-conjugated
Storage Buffer	PBS with 0.02% sodium azide, 50% glycerol, pH7.3.
Purification Method	Antigen Affinity Purified
Isotype	IgG
Clonality	Polyclonal
Alias	Mitogen-activated protein kinase kinase kinase kinase 5 (EC 2.7.11.1) (Kinase homologous to SPS1/STE20) (KHS) (MAPK/ERK kinase kinase kinase 5) (MEK kinase kinase 5) (MEKKK 5), MAP4K5
Immunogen Species	Homo sapiens (Human)
Research Area	Signal Transduction
Target Names	MAP4K5

Image



Western blot
 All lanes: MAP4K5 antibody at 4.2µg/ml + Mouse brain tissue
 Secondary
 Goat polyclonal to rabbit IgG at 1/10000 dilution
 Predicted band size: 95 kDa
 Observed band size: 95 kDa



Immunohistochemistry of paraffin-embedded human prostate cancer using CSB-PA013440DSR2HU at dilution of 1:100

Usage

For Research Use Only. Not for use in diagnostic or therapeutic procedures.