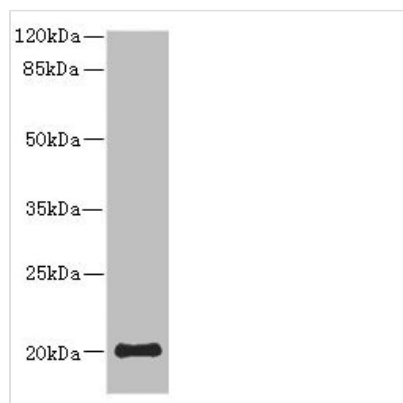




PPP3R2 Antibody

Product Code	CSB-PA856978ESR2HU
Storage	Upon receipt, store at -20°C or -80°C. Avoid repeated freeze.
Uniprot No.	Q96LZ3
Immunogen	Recombinant Human Calcineurin subunit B type 2 protein (1-170AA)
Raised In	Rabbit
Species Reactivity	Human, Mouse
Tested Applications	ELISA, WB, IHC; Recommended dilution: WB:1:1000-1:5000, IHC:1:20-1:200
Form	Liquid
Conjugate	Non-conjugated
Storage Buffer	PBS with 0.02% sodium azide, 50% glycerol, pH7.3.
Purification Method	Antigen Affinity Purified
Isotype	IgG
Clonality	Polyclonal
Alias	Calcineurin subunit B type 2 (Calcineurin B-like protein) (CBLP) (Calcineurin BII) (CNBII) (PPP3R1-like) (Protein phosphatase 2B regulatory subunit 2) (Protein phosphatase 3 regulatory subunit B beta isoform), PPP3R2, CBLP PPP3RL
Immunogen Species	Homo sapiens (Human)
Research Area	Signal Transduction
Target Names	PPP3R2

Image



Western blot

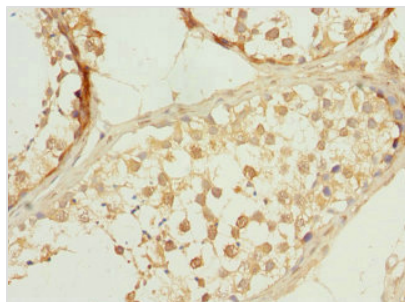
All lanes: PPP3R2 antibody at 9.25µg/ml +
Mouse brain tissue

Secondary

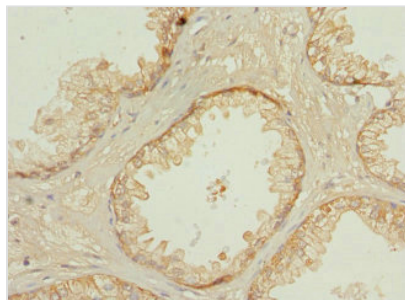
Goat polyclonal to rabbit IgG at 1/10000 dilution

Predicted band size: 20 kDa

Observed band size: 20 kDa



Immunohistochemistry of paraffin-embedded human testis tissue using CSB-PA856978ESR2HU at dilution of 1:100



Immunohistochemistry of paraffin-embedded human prostate cancer using CSB-PA856978ESR2HU at dilution of 1:100

Usage

For Research Use Only. Not for use in diagnostic or therapeutic procedures.