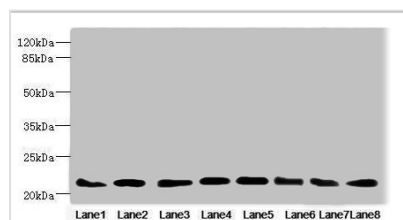




RAB23 Antibody

Product Code	CSB-PA891960ESR1HU
Storage	Upon receipt, store at -20°C or -80°C. Avoid repeated freeze.
Uniprot No.	Q9ULC3
Immunogen	Recombinant Human Ras-related protein Rab-23 protein (1-237AA)
Raised In	Rabbit
Species Reactivity	Human, Mouse, Rat
Tested Applications	ELISA, WB, IHC; Recommended dilution: WB:1:1000-1:5000, IHC:1:20-1:200
Form	Liquid
Conjugate	Non-conjugated
Storage Buffer	PBS with 0.02% sodium azide, 50% glycerol, pH7.3.
Purification Method	Antigen Affinity Purified
Isotype	IgG
Clonality	Polyclonal
Alias	Ras-related protein Rab-23, RAB23
Immunogen Species	Homo sapiens (Human)
Research Area	Neuroscience
Target Names	RAB23

Image



Western blot

All lanes: RAB23 antibody at 3.88μg/ml

Lane 1: Mouse ocular tissue

Lane 2: Rat brain tissue

Lane 3: Mouse kidney tissue

Lane 4: Mouse lung tissue

Lane 5: Mouse brain tissue

Lane 6: NIH/3T3 whole cell lysate

Lane 7: MCF-7 whole cell lysate

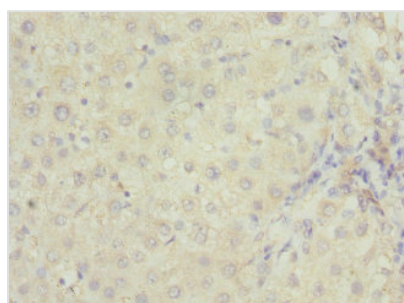
Lane 8: Hela whole cell lysate

Secondary

Goat polyclonal to rabbit IgG at 1/10000 dilution

Predicted band size: 27 kDa

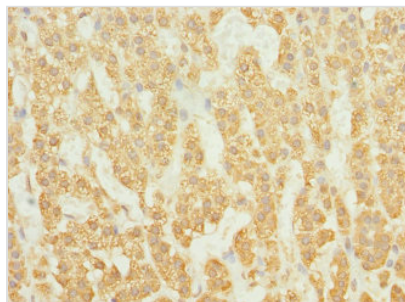
Observed band size: 27 kDa



Immunohistochemistry of paraffin-embedded

human liver cancer using CSB-

PA891960ESR1HU at dilution of 1:100



Immunohistochemistry of paraffin-embedded human adrenal gland tissue using CSB-PA891960ESR1HU at dilution of 1:100