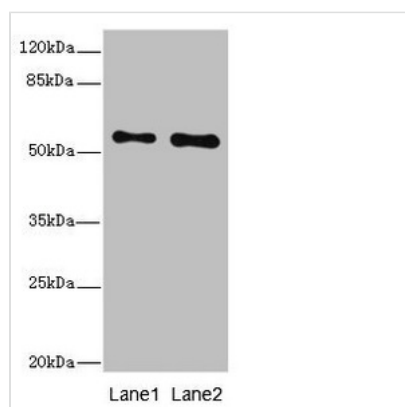




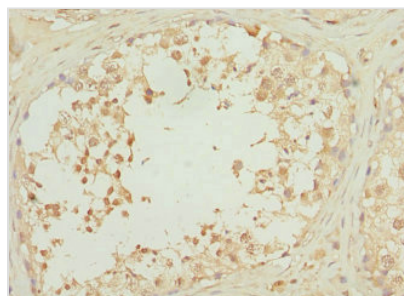
RPS6KL1 Antibody

Product Code	CSB-PA020474ESR1HU
Storage	Upon receipt, store at -20°C or -80°C. Avoid repeated freeze.
Uniprot No.	Q9Y6S9
Immunogen	Recombinant Human Ribosomal protein S6 kinase-like 1 protein (1-130AA)
Raised In	Rabbit
Species Reactivity	Human, Mouse
Tested Applications	ELISA, WB, IHC; Recommended dilution: WB:1:1000-1:5000, IHC:1:20-1:200
Form	Liquid
Conjugate	Non-conjugated
Storage Buffer	PBS with 0.02% sodium azide, 50% glycerol, pH7.3.
Purification Method	Antigen Affinity Purified
Isotype	IgG
Clonality	Polyclonal
Alias	Ribosomal protein S6 kinase-like 1 (EC 2.7.11.1), RPS6KL1
Immunogen Species	Homo sapiens (Human)
Research Area	Signal Transduction
Target Names	RPS6KL1

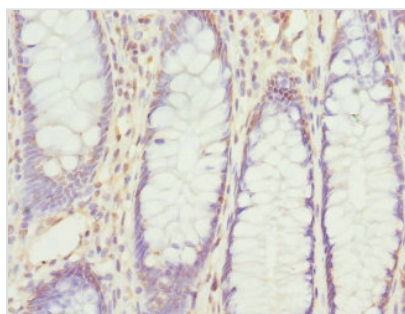
Image



Western blot
 All lanes: RPS6KL1 antibody at 4.02μg/ml
 Lane 1: Mouse heart tissue
 Lane 2: Mouse kidney tissue
 Secondary
 Goat polyclonal to rabbit IgG at 1/10000 dilution
 Predicted band size: 61, 60, 29 kDa
 Observed band size: 61 kDa



Immunohistochemistry of paraffin-embedded human testis tissue using CSB-PA020474ESR1HU at dilution of 1:100



Immunohistochemistry of paraffin-embedded human colon cancer using CSB-PA020474ESR1HU at dilution of 1:100