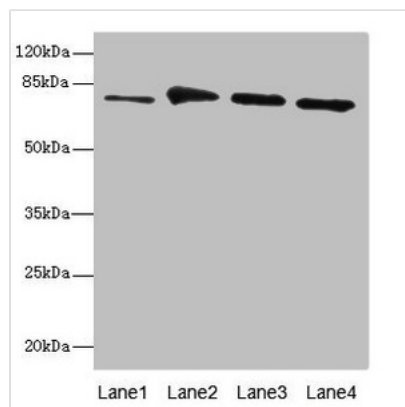




# RUFY1 Antibody

<b>Product Code</b>	CSB-PA839417ESR1HU
<b>Storage</b>	Upon receipt, store at -20°C or -80°C. Avoid repeated freeze.
<b>Uniprot No.</b>	Q96T51
<b>Immunogen</b>	Recombinant Human RUN and FYVE domain-containing protein 1 protein (439-708AA)
<b>Raised In</b>	Rabbit
<b>Species Reactivity</b>	Human, Mouse
<b>Tested Applications</b>	ELISA, WB, IHC; Recommended dilution: WB:1:1000-1:5000, IHC:1:20-1:200
<b>Form</b>	Liquid
<b>Conjugate</b>	Non-conjugated
<b>Storage Buffer</b>	PBS with 0.02% sodium azide, 50% glycerol, pH7.3.
<b>Purification Method</b>	Antigen Affinity Purified
<b>Isotype</b>	IgG
<b>Clonality</b>	Polyclonal
<b>Alias</b>	RUN and FYVE domain-containing protein 1 (FYVE-finger protein EIP1) (La-binding protein 1) (Rab4-interacting protein) (Zinc finger FYVE domain-containing protein 12), RUFY1, RABIP4 ZFYVE12
<b>Immunogen Species</b>	Homo sapiens (Human)
<b>Research Area</b>	Signal Transduction
<b>Target Names</b>	RUFY1

## Image



### Western blot

All lanes: RUFY1 antibody at 7.54μg/ml

Lane 1: Mouse kidney tissue

Lane 2: Mouse heart tissue

Lane 3: Mouse lung tissue

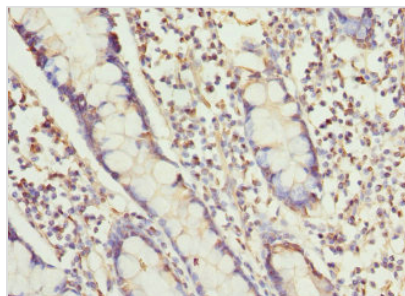
Lane 4: Mouse gonadal tissue

Secondary

Goat polyclonal to rabbit IgG at 1/10000 dilution

Predicted band size: 80, 70, 45 kDa

Observed band size: 80 kDa



Immunohistochemistry of paraffin-embedded human small intestine tissue using CSB-PA839417ESR1HU at dilution of 1:100