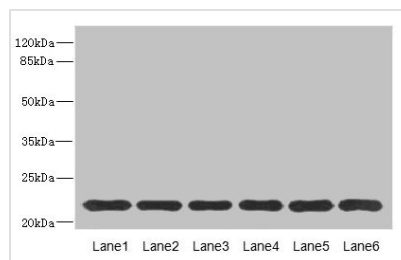




SAR1A Antibody

Product Code	CSB-PA873630ESR2HU
Storage	Upon receipt, store at -20°C or -80°C. Avoid repeated freeze.
Uniprot No.	Q9NR31
Immunogen	Recombinant Human GTP-binding protein SAR1a protein (1-198AA)
Raised In	Rabbit
Species Reactivity	Human, Mouse
Tested Applications	ELISA, WB, IHC; Recommended dilution: WB:1:1000-1:5000, IHC:1:20-1:200
Form	Liquid
Conjugate	Non-conjugated
Storage Buffer	PBS with 0.02% sodium azide, 50% glycerol, pH7.3.
Purification Method	Antigen Affinity Purified
Isotype	IgG
Clonality	Polyclonal
Alias	GTP-binding protein SAR1a (COPII-associated small GTPase), SAR1A, SAR1 SARA SARA1
Immunogen Species	Homo sapiens (Human)
Research Area	Signal Transduction
Target Names	SAR1A

Image



Western blot

All lanes: SAR1A antibody at 4.57μg/ml

Lane 1: Mouse lung tissue

Lane 2: NIH/3T3 whole cell lysate

Lane 3: A431 whole cell lysate

Lane 4: MCF-7 whole cell lysate

Lane 5: Jurkat whole cell lysate

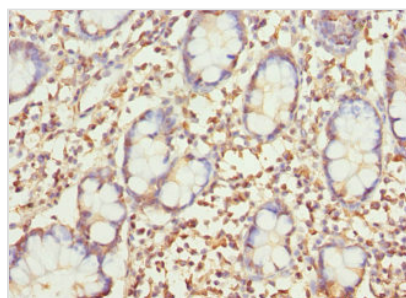
Lane 6: HepG2 whole cell lysate

Secondary

Goat polyclonal to rabbit IgG at 1/10000 dilution

Predicted band size: 23, 18 kDa

Observed band size: 23 kDa



Immunohistochemistry of paraffin-embedded

human small intestine tissue using CSB-PA873630ESR2HU at dilution of 1:100