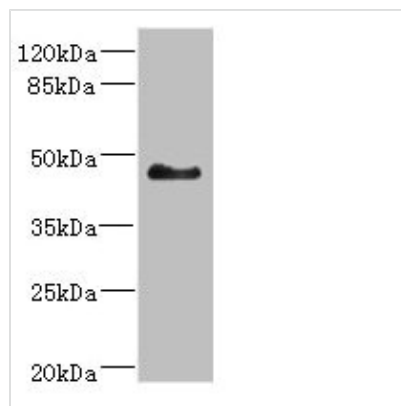




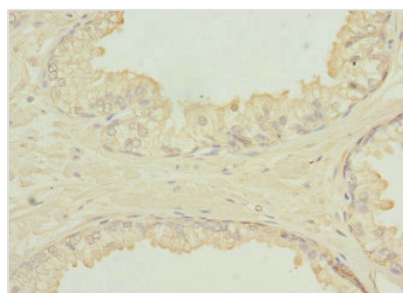
SH3GLB2 Antibody

Product Code	CSB-PA868296ESR1HU
Storage	Upon receipt, store at -20°C or -80°C. Avoid repeated freeze.
Uniprot No.	Q9NR46
Immunogen	Recombinant Human Endophilin-B2 protein (1-250AA)
Raised In	Rabbit
Species Reactivity	Human, Mouse
Tested Applications	ELISA, WB, IHC; Recommended dilution: WB:1:1000-1:5000, IHC:1:20-1:200
Form	Liquid
Conjugate	Non-conjugated
Storage Buffer	PBS with 0.02% sodium azide, 50% glycerol, pH7.3.
Purification Method	Antigen Affinity Purified
Isotype	IgG
Clonality	Polyclonal
Alias	Endophilin-B2 (SH3 domain-containing GRB2-like protein B2), SH3GLB2, KIAA1848
Immunogen Species	Homo sapiens (Human)
Research Area	Cancer
Target Names	SH3GLB2

Image



Western blot
All lanes: SH3GLB2 antibody at 5.5µg/ml +
Mouse liver tissue
Secondary
Goat polyclonal to rabbit IgG at 1/10000 dilution
Predicted band size: 44, 45 kDa
Observed band size: 44 kDa



Immunohistochemistry of paraffin-embedded
human prostate cancer using CSB-
PA868296ESR1HU at dilution of 1:100

