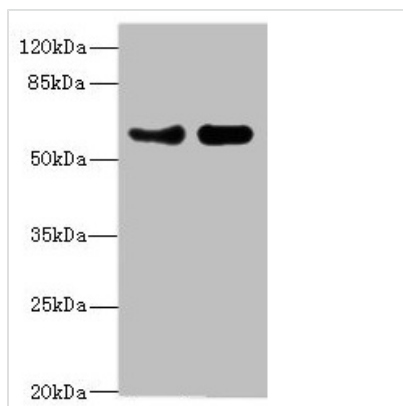




VANGL1 Antibody

Product Code	CSB-PA848385ESR1HU
Storage	Upon receipt, store at -20°C or -80°C. Avoid repeated freeze.
Uniprot No.	Q8TAA9
Immunogen	Recombinant Human Vang-like protein 1 protein (275-524AA)
Raised In	Rabbit
Species Reactivity	Human
Tested Applications	ELISA, WB, IHC; Recommended dilution: WB:1:1000-1:5000, IHC:1:20-1:200
Form	Liquid
Conjugate	Non-conjugated
Storage Buffer	PBS with 0.02% sodium azide, 50% glycerol, pH7.3.
Purification Method	Antigen Affinity Purified
Isotype	IgG
Clonality	Polyclonal
Alias	Vang-like protein 1 (Loop-tail protein 2 homolog) (LPP2) (Strabismus 2) (Van Gogh-like protein 1), VANGL1, STB2
Immunogen Species	Homo sapiens (Human)
Research Area	Neuroscience
Target Names	VANGL1

Image



Western blot

All lanes: VANGL1 antibody at 3.38µg/ml

Lane 1: PC-3 whole cell lysate

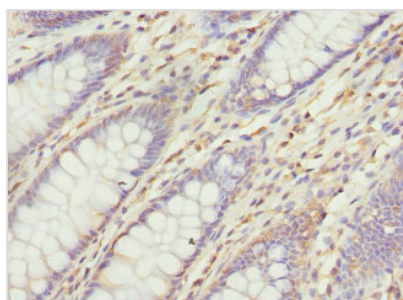
Lane 2: Hela whole cell lysate

Secondary

Goat polyclonal to rabbit IgG at 1/10000 dilution

Predicted band size: 60 kDa

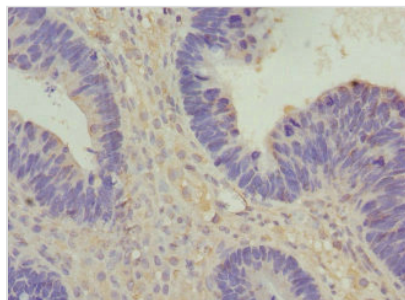
Observed band size: 60 kDa



Immunohistochemistry of paraffin-embedded

human colon cancer using CSB-

PA848385ESR1HU at dilution of 1:100



Immunohistochemistry of paraffin-embedded human ovarian cancer using CSB-PA848385ESR1HU at dilution of 1:100

Usage

For Research Use Only. Not for use in diagnostic or therapeutic procedures.