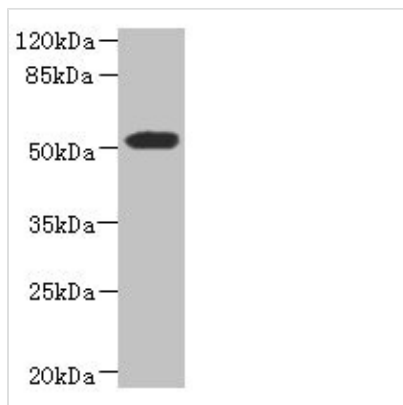




ASPSCR1 Antibody

Product Code	CSB-PA866328ESR1HU
Storage	Upon receipt, store at -20°C or -80°C. Avoid repeated freeze.
Uniprot No.	Q9BZE9
Immunogen	Recombinant Human Tether containing UBX domain for GLUT4 protein (284-553AA)
Raised In	Rabbit
Species Reactivity	Human
Tested Applications	ELISA, WB, IHC; Recommended dilution: WB:1:1000-1:5000, IHC:1:20-1:200
Form	Liquid
Conjugate	Non-conjugated
Storage Buffer	PBS with 0.02% sodium azide, 50% glycerol, pH7.3.
Purification Method	Antigen Affinity Purified
Isotype	IgG
Clonality	Polyclonal
Alias	Tether containing UBX domain for GLUT4 (Alveolar soft part sarcoma chromosomal region candidate gene 1 protein) (Alveolar soft part sarcoma locus) (Renal papillary cell carcinoma protein 17) (UBX domain-containing protein 9), ASPSCR1, ASPL RCC17 TUG UBXD9 UBXN9
Immunogen Species	Homo sapiens (Human)
Research Area	Signal Transduction
Target Names	ASPSCR1

Image



Western blot

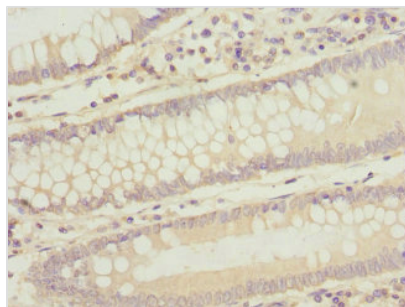
All lanes: ASPSCR1 antibody at 8.71µg/ml + 293T whole cell lysate

Secondary

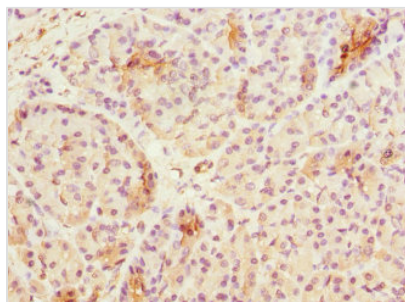
Goat polyclonal to rabbit IgG at 1/10000 dilution

Predicted band size: 61, 70, 55, 38 kDa

Observed band size: 61 kDa



Immunohistochemistry of paraffin-embedded human colon cancer using CSB-PA866328ESR1HU at dilution of 1:100



Immunohistochemistry of paraffin-embedded human pancreatic tissue using CSB-PA866328ESR1HU at dilution of 1:100

Usage

For Research Use Only. Not for use in diagnostic or therapeutic procedures.