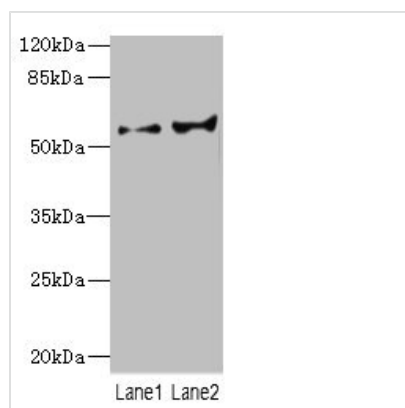




# CYP2C18 Antibody

<b>Product Code</b>	CSB-PA006416ESR1HU
<b>Storage</b>	Upon receipt, store at -20°C or -80°C. Avoid repeated freeze.
<b>Uniprot No.</b>	P33260
<b>Immunogen</b>	Recombinant Human Cytochrome P450 2C18 protein (231-490AA)
<b>Raised In</b>	Rabbit
<b>Species Reactivity</b>	Human
<b>Tested Applications</b>	ELISA, WB, IHC; Recommended dilution: WB:1:1000-1:5000, IHC:1:20-1:200
<b>Form</b>	Liquid
<b>Conjugate</b>	Non-conjugated
<b>Storage Buffer</b>	PBS with 0.02% sodium azide, 50% glycerol, pH7.3.
<b>Purification Method</b>	Antigen Affinity Purified
<b>Isotype</b>	IgG
<b>Clonality</b>	Polyclonal
<b>Alias</b>	Cytochrome P450 2C18 (EC 1.14.14.1) (CYPIIC18) (Cytochrome P450-6b/29c), CYP2C18
<b>Immunogen Species</b>	Homo sapiens (Human)
<b>Research Area</b>	Cardiovascular
<b>Target Names</b>	CYP2C18

## Image



### Western blot

All lanes: CYP2C18 antibody at 5.98µg/ml

Lane 1: HL60 whole cell lysate

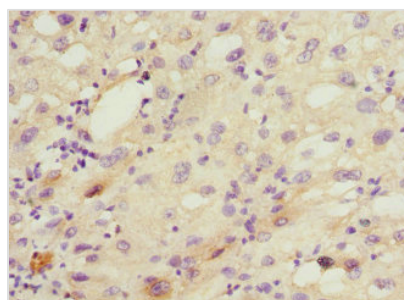
Lane 2: 293T whole cell lysate

Secondary

Goat polyclonal to rabbit IgG at 1/10000 dilution

Predicted band size: 56, 49 kDa

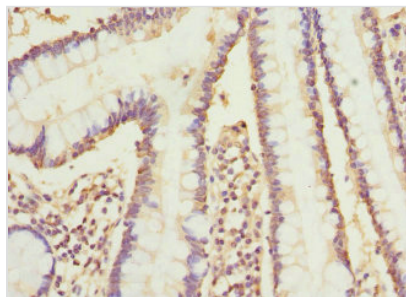
Observed band size: 56 kDa



Immunohistochemistry of paraffin-embedded

human liver cancer using CSB-

PA006416ESR1HU at dilution of 1:100



Immunohistochemistry of paraffin-embedded human small intestine tissue using CSB-PA006416ESR1HU at dilution of 1:100

## Usage

For Research Use Only. Not for use in diagnostic or therapeutic procedures.