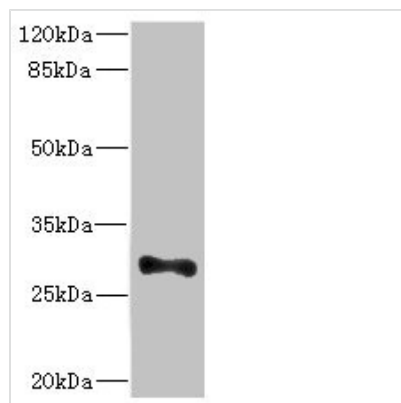




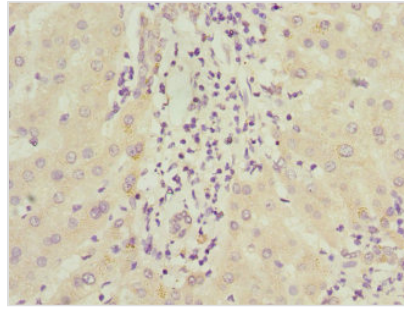
# ICAM4 Antibody

|                            |   |
|----------------------------|---|
| <b>Product Code</b>        | CSB-PA619892ESR1HU  |
| <b>Storage</b>             | Upon receipt, store at -20°C or -80°C. Avoid repeated freeze.   |
| <b>Uniprot No.</b>         | Q14773  |
| <b>Immunogen</b>           | Recombinant Human Intercellular adhesion molecule 4 protein (20-140AA)  |
| <b>Raised In</b>           | Rabbit  |
| <b>Species Reactivity</b>  | Human, Mouse  |
| <b>Tested Applications</b> | ELISA, WB, IHC; Recommended dilution: WB:1:1000-1:5000, IHC:1:20-1:200  |
| <b>Form</b>                | Liquid  |
| <b>Conjugate</b>           | Non-conjugated  |
| <b>Storage Buffer</b>      | PBS with 0.02% sodium azide, 50% glycerol, pH7.3.   |
| <b>Purification Method</b> | Antigen Affinity Purified   |
| <b>Isotype</b>             | IgG   |
| <b>Clonality</b>           | Polyclonal  |
| <b>Alias</b>               | Intercellular adhesion molecule 4 (ICAM-4) (Landsteiner-Wiener blood group glycoprotein) (LW blood group protein) (CD antigen CD242), ICAM4, LW |
| <b>Immunogen Species</b>   | Homo sapiens (Human)  |
| <b>Research Area</b>       | Signal Transduction   |
| <b>Target Names</b>        | ICAM4   |

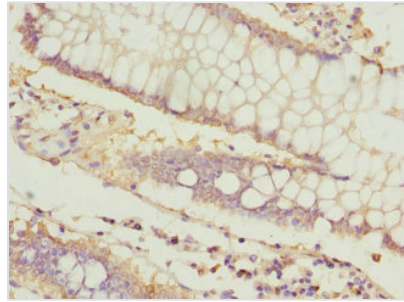
## Image



Western blot  
 All lanes: ICAM4 antibody at 4.98µg/ml + Mouse brain tissue  
 Secondary  
 Goat polyclonal to rabbit IgG at 1/10000 dilution  
 Predicted band size: 30, 26 kDa  
 Observed band size: 30 kDa



Immunohistochemistry of paraffin-embedded human liver cancer using CSB-PA619892ESR1HU at dilution of 1:100



Immunohistochemistry of paraffin-embedded human colon cancer using CSB-PA619892ESR1HU at dilution of 1:100

## Usage

For Research Use Only. Not for use in diagnostic or therapeutic procedures.