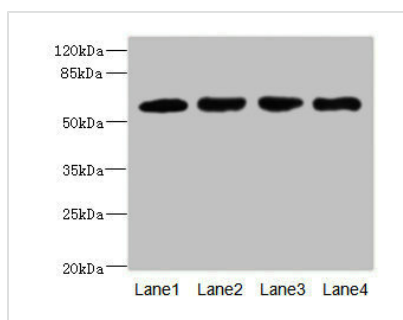




IL21R Antibody

Product Code	CSB-PA862061ESR2HU
Storage	Upon receipt, store at -20°C or -80°C. Avoid repeated freeze.
Uniprot No.	Q9HBE5
Immunogen	Recombinant Human Interleukin-21 receptor protein (20-240AA)
Raised In	Rabbit
Species Reactivity	Human
Tested Applications	ELISA, WB, IHC; Recommended dilution: WB:1:1000-1:5000, IHC:1:20-1:200
Form	Liquid
Conjugate	Non-conjugated
Storage Buffer	PBS with 0.02% sodium azide, 50% glycerol, pH7.3.
Purification Method	Antigen Affinity Purified
Isotype	IgG
Clonality	Polyclonal
Alias	Interleukin-21 receptor (IL-21 receptor) (IL-21R) (Novel interleukin receptor) (CD antigen CD360), IL21R, NILR
Immunogen Species	Homo sapiens (Human)
Research Area	Immunology
Target Names	IL21R

Image



Western blot

All lanes: IL21R antibody at 2.18µg/ml

Lane 1: A549 whole cell lysate

Lane 2: Raji whole cell lysate

Lane 3: Colo320 whole cell lysate

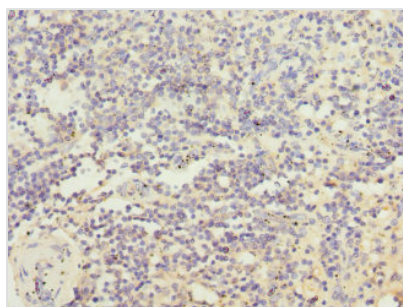
Lane 4: K562 whole cell lysate

Secondary

Goat polyclonal to rabbit IgG at 1/10000 dilution

Predicted band size: 59 kDa

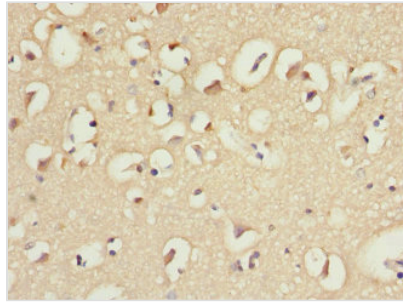
Observed band size: 59 kDa



Immunohistochemistry of paraffin-embedded

human spleen tissue using CSB-

PA862061ESR2HU at dilution of 1:100



Immunohistochemistry of paraffin-embedded human brain tissue using CSB-PA862061ESR2HU at dilution of 1:100

Usage

For Research Use Only. Not for use in diagnostic or therapeutic procedures.