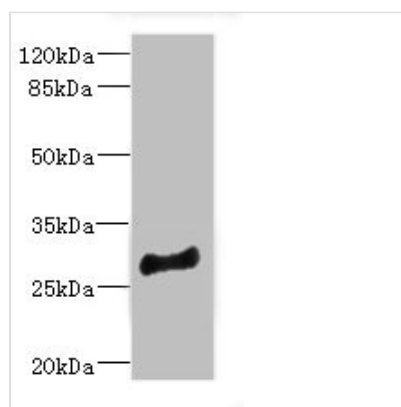




# MLF1 Antibody

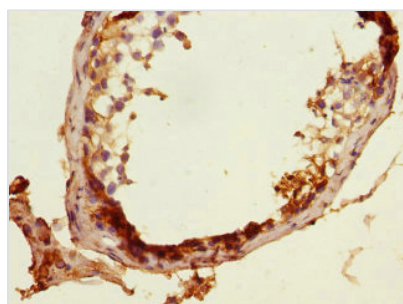
|                            |  |
|----------------------------|--|
| <b>Product Code</b>        | CSB-PA014621ESR1HU   |
| <b>Storage</b>             | Upon receipt, store at -20°C or -80°C. Avoid repeated freeze.              |
| <b>Uniprot No.</b>         | P58340   |
| <b>Immunogen</b>           | Recombinant Human Myeloid leukemia factor 1 protein (1-268AA)              |
| <b>Raised In</b>           | Rabbit   |
| <b>Species Reactivity</b>  | Human, Mouse   |
| <b>Tested Applications</b> | ELISA, WB, IHC; Recommended dilution: WB:1:1000-1:5000, IHC:1:20-1:200     |
| <b>Form</b>                | Liquid   |
| <b>Conjugate</b>           | Non-conjugated   |
| <b>Storage Buffer</b>      | PBS with 0.02% sodium azide, 50% glycerol, pH7.3.                          |
| <b>Purification Method</b> | Antigen Affinity Purified  |
| <b>Isotype</b>             | IgG  |
| <b>Clonality</b>           | Polyclonal   |
| <b>Alias</b>               | Myeloid leukemia factor 1 (Myelodysplasia-myeloid leukemia factor 1), MLF1 |
| <b>Immunogen Species</b>   | Homo sapiens (Human)   |
| <b>Research Area</b>       | Cardiovascular   |
| <b>Target Names</b>        | MLF1   |

## Image

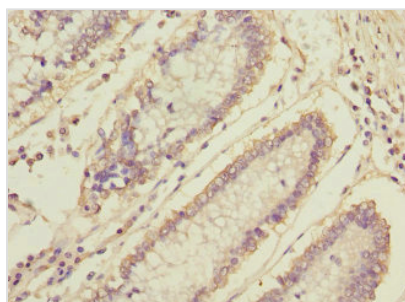


### Western blot

All lanes: MLF1 antibody at 4.05µg/ml + Mouse brain tissue  
 Secondary  
 Goat polyclonal to rabbit IgG at 1/10000 dilution  
 Predicted band size: 31, 24, 34, 28, 30 kDa  
 Observed band size: 31 kDa



Immunohistochemistry of paraffin-embedded human testis tissue using CSB-PA014621ESR1HU at dilution of 1:100



Immunohistochemistry of paraffin-embedded human colon cancer using CSB-PA014621ESR1HU at dilution of 1:100

---

**Usage**

For Research Use Only. Not for use in diagnostic or therapeutic procedures.