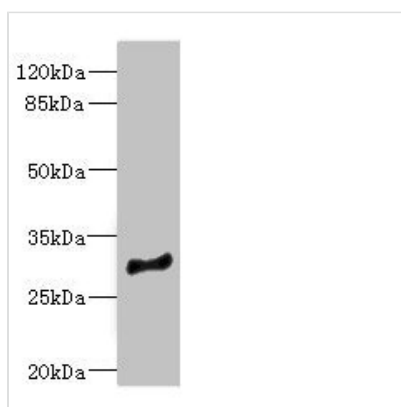




MLF1 Antibody

Product Code	CSB-PA014621ESR2HU
Storage	Upon receipt, store at -20°C or -80°C. Avoid repeated freeze.
Uniprot No.	P58340
Immunogen	Recombinant Human Myeloid leukemia factor 1 protein (1-268AA)
Raised In	Rabbit
Species Reactivity	Human, Mouse
Tested Applications	ELISA, WB; Recommended dilution: WB:1:1000-1:5000
Form	Liquid
Conjugate	Non-conjugated
Storage Buffer	PBS with 0.02% sodium azide, 50% glycerol, pH7.3.
Purification Method	Antigen Affinity Purified
Isotype	IgG
Clonality	Polyclonal
Alias	Myeloid leukemia factor 1 (Myelodysplasia-myeloid leukemia factor 1), MLF1
Immunogen Species	Homo sapiens (Human)
Research Area	Cardiovascular
Target Names	MLF1

Image



Western blot

All lanes: MLF1 antibody at 2.94µg/ml + Mouse brain tissue
 Secondary
 Goat polyclonal to rabbit IgG at 1/10000 dilution
 Predicted band size: 31, 24, 34, 28, 30 kDa
 Observed band size: 31 kDa