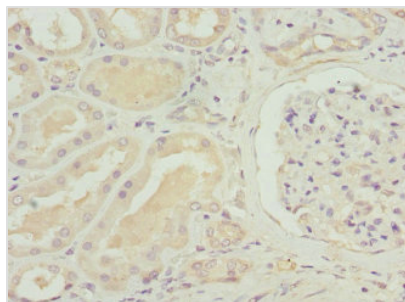




SLC12A6 Antibody

Product Code	CSB-PA887049DSR2HU
Storage	Upon receipt, store at -20°C or -80°C. Avoid repeated freeze.
Uniprot No.	Q9UHW9
Immunogen	Recombinant Human Solute carrier family 12 member 6 protein (60-190AA)
Raised In	Rabbit
Species Reactivity	Human
Tested Applications	ELISA, IHC; Recommended dilution: IHC:1:20-1:200
Form	Liquid
Conjugate	Non-conjugated
Storage Buffer	PBS with 0.02% sodium azide, 50% glycerol, pH7.3.
Purification Method	Antigen Affinity Purified
Isotype	IgG
Clonality	Polyclonal
Alias	Solute carrier family 12 member 6 (Electroneutral potassium-chloride cotransporter 3) (K-Cl cotransporter 3), SLC12A6, KCC3
Immunogen Species	Homo sapiens (Human)
Research Area	Neuroscience
Target Names	SLC12A6

Image



Immunohistochemistry of paraffin-embedded human kidney tissue using CSB-PA887049DSR2HU at dilution of 1:100

Usage

For Research Use Only. Not for use in diagnostic or therapeutic procedures.