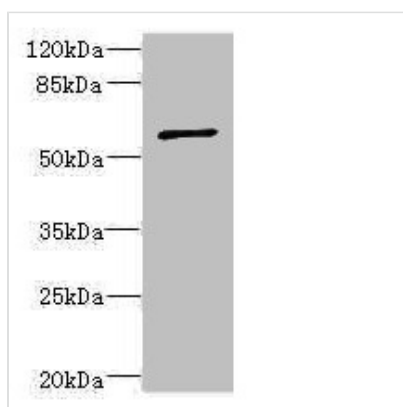




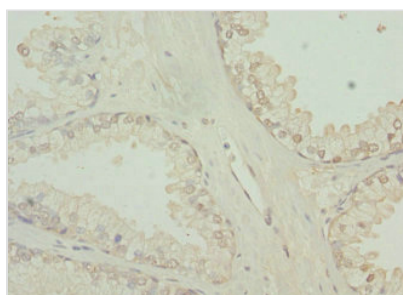
TBCE Antibody

Product Code	CSB-PA613603ESR1HU
Storage	Upon receipt, store at -20°C or -80°C. Avoid repeated freeze.
Uniprot No.	Q15813
Immunogen	Recombinant Human Tubulin-specific chaperone E protein (328-527AA)
Raised In	Rabbit
Species Reactivity	Human
Tested Applications	ELISA, WB, IHC; Recommended dilution: WB:1:1000-1:5000, IHC:1:20-1:200
Form	Liquid
Conjugate	Non-conjugated
Storage Buffer	PBS with 0.02% sodium azide, 50% glycerol, pH7.3.
Purification Method	Antigen Affinity Purified
Isotype	IgG
Clonality	Polyclonal
Alias	Tubulin-specific chaperone E (Tubulin-folding cofactor E), TBCE
Immunogen Species	Homo sapiens (Human)
Research Area	Signal Transduction
Target Names	TBCE

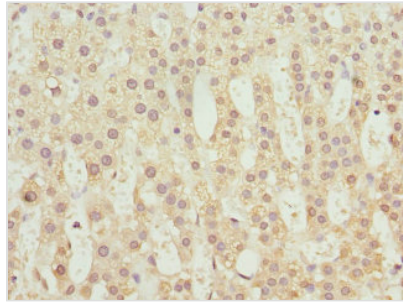
Image



Western blot
 All lanes: TBCE antibody at 5.55µg/ml + CEM whole cell lysate
 Secondary
 Goat polyclonal to rabbit IgG at 1/10000 dilution
 Predicted band size: 60, 65 kDa
 Observed band size: 60 kDa



Immunohistochemistry of paraffin-embedded human prostate cancer using CSB-PA613603ESR1HU at dilution of 1:100



Immunohistochemistry of paraffin-embedded human adrenal gland tissue using CSB-PA613603ESR1HU at dilution of 1:100

Usage

For Research Use Only. Not for use in diagnostic or therapeutic procedures.