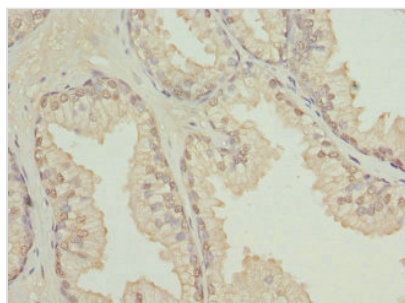




# TBCE Antibody

|                            |  |
|----------------------------|--|
| <b>Product Code</b>        | CSB-PA613603ESR2HU   |
| <b>Storage</b>             | Upon receipt, store at -20°C or -80°C. Avoid repeated freeze.      |
| <b>Uniprot No.</b>         | Q15813   |
| <b>Immunogen</b>           | Recombinant Human Tubulin-specific chaperone E protein (328-527AA) |
| <b>Raised In</b>           | Rabbit   |
| <b>Species Reactivity</b>  | Human  |
| <b>Tested Applications</b> | ELISA, IHC; Recommended dilution: IHC:1:20-1:200                   |
| <b>Form</b>                | Liquid   |
| <b>Conjugate</b>           | Non-conjugated   |
| <b>Storage Buffer</b>      | PBS with 0.02% sodium azide, 50% glycerol, pH7.3.                  |
| <b>Purification Method</b> | Antigen Affinity Purified  |
| <b>Isotype</b>             | IgG  |
| <b>Clonality</b>           | Polyclonal   |
| <b>Alias</b>               | Tubulin-specific chaperone E (Tubulin-folding cofactor E), TBCE    |
| <b>Immunogen Species</b>   | Homo sapiens (Human)   |
| <b>Research Area</b>       | Signal Transduction  |
| <b>Target Names</b>        | TBCE   |

## Image



Immunohistochemistry of paraffin-embedded human prostate cancer using CSB-PA613603ESR2HU at dilution of 1:100

## Usage

For Research Use Only. Not for use in diagnostic or therapeutic procedures.