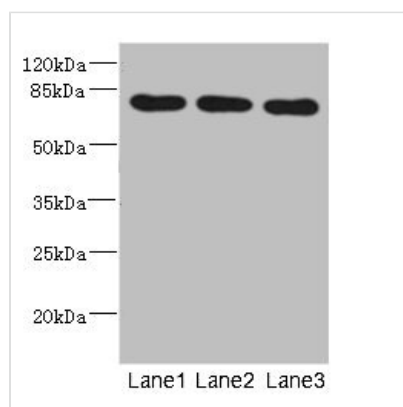




# BBS2 Antibody

<b>Product Code</b>	CSB-PA866303ESR1HU
<b>Storage</b>	Upon receipt, store at -20°C or -80°C. Avoid repeated freeze.
<b>Uniprot No.</b>	Q9BXC9
<b>Immunogen</b>	Recombinant Human Bardet-Biedl syndrome 2 protein (1-96AA)
<b>Raised In</b>	Rabbit
<b>Species Reactivity</b>	Human, Mouse
<b>Tested Applications</b>	ELISA, WB, IHC; Recommended dilution: WB:1:1000-1:5000, IHC:1:20-1:200
<b>Form</b>	Liquid
<b>Conjugate</b>	Non-conjugated
<b>Storage Buffer</b>	PBS with 0.02% sodium azide, 50% glycerol, pH7.3.
<b>Purification Method</b>	Antigen Affinity Purified
<b>Isotype</b>	IgG
<b>Clonality</b>	Polyclonal
<b>Alias</b>	Bardet-Biedl syndrome 2 protein, BBS2
<b>Immunogen Species</b>	Homo sapiens (Human)
<b>Research Area</b>	Others
<b>Target Names</b>	BBS2

## Image



### Western blot

All lanes: BBS2 antibody at 5.01µg/ml

Lane 1: Mouse liver tissue

Lane 2: Mouse brain tissue

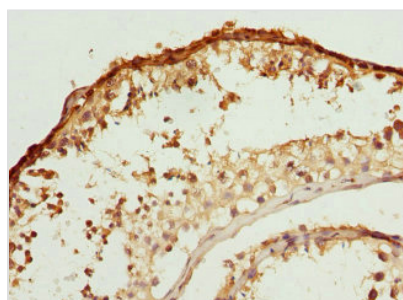
Lane 3: Mouse gonadal tissue

Secondary

Goat polyclonal to rabbit IgG at 1/10000 dilution

Predicted band size: 80 kDa

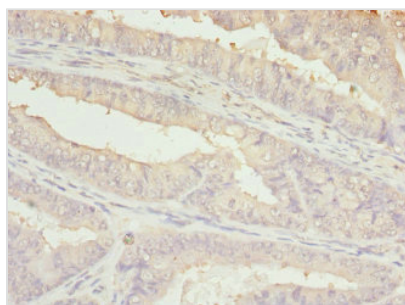
Observed band size: 80 kDa



Immunohistochemistry of paraffin-embedded

human testis tissue using CSB-

PA866303ESR1HU at dilution of 1:100



Immunohistochemistry of paraffin-embedded human endometrial cancer using CSB-PA866303ESR1HU at dilution of 1:100

---

**Usage**

For Research Use Only. Not for use in diagnostic or therapeutic procedures.