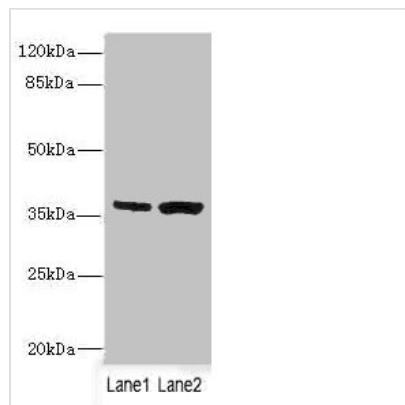




# C1GALT1C1 Antibody

<b>Product Code</b>	CSB-PA003490ESR1HU
<b>Storage</b>	Upon receipt, store at -20°C or -80°C. Avoid repeated freeze.
<b>Uniprot No.</b>	Q96EU7
<b>Immunogen</b>	Recombinant Human C1GALT1-specific chaperone 1 protein (30-190AA)
<b>Raised In</b>	Rabbit
<b>Species Reactivity</b>	Human, Mouse
<b>Tested Applications</b>	ELISA, WB, IHC, IF; Recommended dilution: WB:1:500-1:2000, IHC:1:20-1:200, IF:1:50-1:200
<b>Form</b>	Liquid
<b>Conjugate</b>	Non-conjugated
<b>Storage Buffer</b>	PBS with 0.02% sodium azide, 50% glycerol, pH7.3.
<b>Purification Method</b>	Antigen Affinity Purified
<b>Isotype</b>	IgG
<b>Clonality</b>	Polyclonal
<b>Alias</b>	C1GALT1-specific chaperone 1 (C38H2-like protein 1) (C38H2-L1) (Core 1 beta1,3-galactosyltransferase 2) (C1Gal-T2) (C1GalT2) (Core 1 beta3-Gal-T2) (Core 1 beta3-galactosyltransferase-specific molecular chaperone), C1GALT1C1, COSMC
<b>Immunogen Species</b>	Homo sapiens (Human)
<b>Research Area</b>	Signal Transduction
<b>Target Names</b>	C1GALT1C1

## Image



### Western blot

All lanes: C1GALT1C1 antibody at 3.97μg/ml

Lane 1: Mouse gonadal tissue

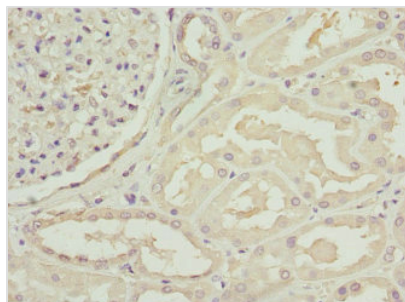
Lane 2: Mouse liver tissue

Secondary

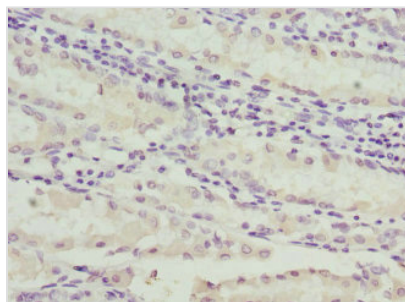
Goat polyclonal to rabbit IgG at 1/10000 dilution

Predicted band size: 36 kDa

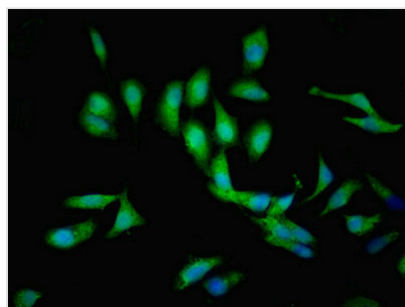
Observed band size: 36 kDa



Immunohistochemistry of paraffin-embedded human kidney tissue using CSB-PA003490ESR1HU at dilution of 1:100



Immunohistochemistry of paraffin-embedded human gastric cancer using CSB-PA003490ESR1HU at dilution of 1:100



Immunofluorescent analysis of Hela cells using CSB-PA003490ESR1HU at dilution of 1:100 and Alexa Fluor 488-conjugated AffiniPure Goat Anti-Rabbit IgG(H+L)