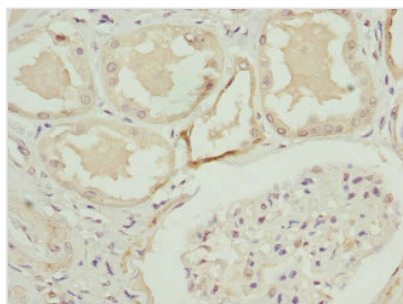




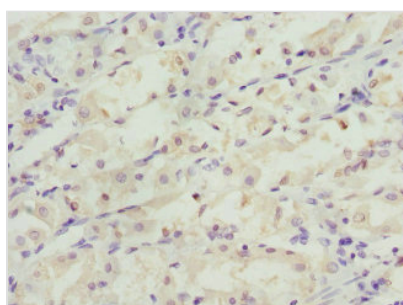
C1GALT1C1 Antibody

| | |
|----------------------------|--|
| Product Code | CSB-PA003490ESR2HU |
| Storage | Upon receipt, store at -20°C or -80°C. Avoid repeated freeze. |
| Uniprot No. | Q96EU7 |
| Immunogen | Recombinant Human C1GALT1-specific chaperone 1 protein (30-190AA) |
| Raised In | Rabbit |
| Species Reactivity | Human |
| Tested Applications | ELISA, IHC; Recommended dilution: IHC:1:20-1:200 |
| Form | Liquid |
| Conjugate | Non-conjugated |
| Storage Buffer | PBS with 0.02% sodium azide, 50% glycerol, pH7.3. |
| Purification Method | Antigen Affinity Purified |
| Isotype | IgG |
| Clonality | Polyclonal |
| Alias | C1GALT1-specific chaperone 1 (C38H2-like protein 1) (C38H2-L1) (Core 1 beta1,3-galactosyltransferase 2) (C1Gal-T2) (C1GalT2) (Core 1 beta3-Gal-T2) (Core 1 beta3-galactosyltransferase-specific molecular chaperone), C1GALT1C1, COSMC |
| Immunogen Species | Homo sapiens (Human) |
| Research Area | Signal Transduction |
| Target Names | C1GALT1C1 |

Image



Immunohistochemistry of paraffin-embedded human kidney tissue using CSB-PA003490ESR2HU at dilution of 1:100



Immunohistochemistry of paraffin-embedded human gastric cancer tissue using CSB-PA003490ESR2HU at dilution of 1:100