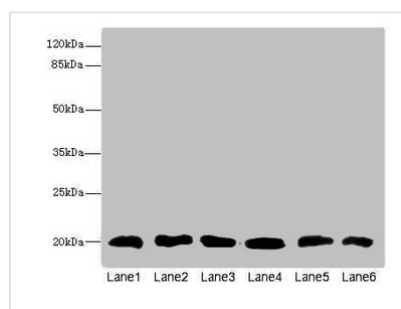




CFL2 Antibody

Product Code	CSB-PA005281ESR1HU
Storage	Upon receipt, store at -20°C or -80°C. Avoid repeated freeze.
Uniprot No.	Q9Y281
Immunogen	Recombinant Human Cofilin-2 protein (1-166AA)
Raised In	Rabbit
Species Reactivity	Human, Mouse
Tested Applications	ELISA, WB, IHC; Recommended dilution: WB:1:1000-1:5000, IHC:1:20-1:200
Form	Liquid
Conjugate	Non-conjugated
Storage Buffer	PBS with 0.02% sodium azide, 50% glycerol, pH7.3.
Purification Method	Antigen Affinity Purified
Isotype	IgG
Clonality	Polyclonal
Alias	Cofilin-2 (Cofilin, muscle isoform), CFL2
Immunogen Species	Homo sapiens (Human)
Research Area	Signal Transduction
Target Names	CFL2

Image



Western blot

All lanes: CFL2 antibody at 3.75µg/ml

Lane 1: Mouse brain tissue

Lane 2: Mouse liver tissue

Lane 3: Mouse lung tissue

Lane 4: LO2 whole cell lysate

Lane 5: Hela whole cell lysate

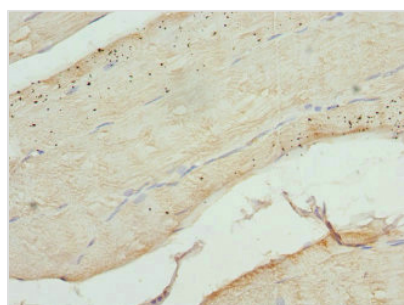
Lane 6: A549 whole cell lysate

Secondary

Goat polyclonal to rabbit IgG at 1/10000 dilution

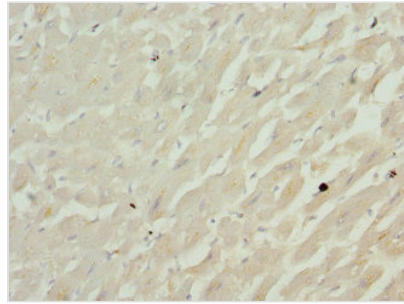
Predicted band size: 19, 17 kDa

Observed band size: 19 kDa



Immunohistochemistry of paraffin-embedded

human skeletal muscle tissue using CSB-PA005281ESR1HU at dilution of 1:100



Immunohistochemistry of paraffin-embedded human heart tissue using CSB-PA005281ESR1HU at dilution of 1:100

Usage

For Research Use Only. Not for use in diagnostic or therapeutic procedures.