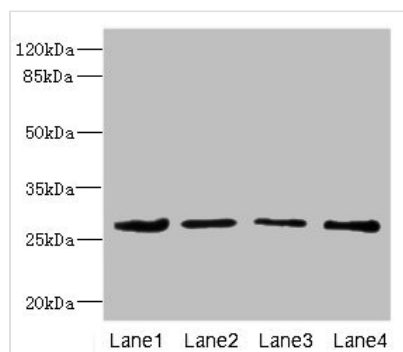




# DCXR Antibody

|                            |   |
|----------------------------|---|
| <b>Product Code</b>        | CSB-PA772022ESR1HU  |
| <b>Storage</b>             | Upon receipt, store at -20°C or -80°C. Avoid repeated freeze.   |
| <b>Uniprot No.</b>         | Q7Z4W1  |
| <b>Immunogen</b>           | Recombinant Human L-xylulose reductase protein (1-244AA)  |
| <b>Raised In</b>           | Rabbit  |
| <b>Species Reactivity</b>  | Human, Mouse  |
| <b>Tested Applications</b> | ELISA, WB, IHC; Recommended dilution: WB:1:1000-1:5000, IHC:1:20-1:200  |
| <b>Form</b>                | Liquid  |
| <b>Conjugate</b>           | Non-conjugated  |
| <b>Storage Buffer</b>      | PBS with 0.02% sodium azide, 50% glycerol, pH7.3.   |
| <b>Purification Method</b> | Antigen Affinity Purified   |
| <b>Isotype</b>             | IgG   |
| <b>Clonality</b>           | Polyclonal  |
| <b>Alias</b>               | L-xylulose reductase (XR) (EC 1.1.1.10) (Carbonyl reductase II) (Dicarbonyl/L-xylulose reductase) (Kidney dicarbonyl reductase) (kiDCR) (Short chain dehydrogenase/reductase family 20C member 1) (Sperm surface protein P34H), DCXR, SDR20C1 |
| <b>Immunogen Species</b>   | Homo sapiens (Human)  |
| <b>Research Area</b>       | Signal Transduction   |
| <b>Target Names</b>        | DCXR  |

## Image



### Western blot

All lanes: DCXR antibody at 2.93µg/ml

Lane 1: Mouse gonadal tissue

Lane 2: HepG2 whole cell lysate

Lane 3: A431 whole cell lysate

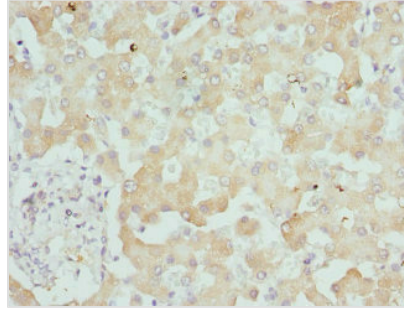
Lane 4: MCF-7 whole cell lysate

Secondary

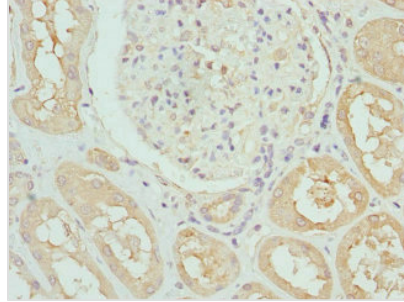
Goat polyclonal to rabbit IgG at 1/10000 dilution

Predicted band size: 26 kDa

Observed band size: 26 kDa



Immunohistochemistry of paraffin-embedded human liver tissue using CSB-PA772022ESR1HU at dilution of 1:100



Immunohistochemistry of paraffin-embedded human kidney tissue using CSB-PA772022ESR1HU at dilution of 1:100

## Usage

For Research Use Only. Not for use in diagnostic or therapeutic procedures.