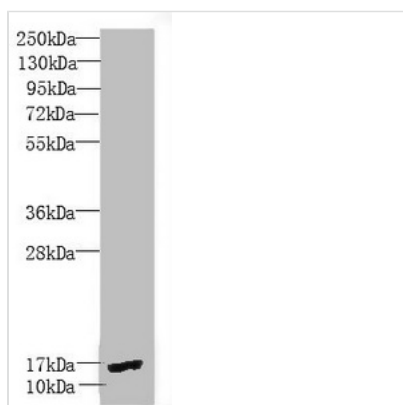




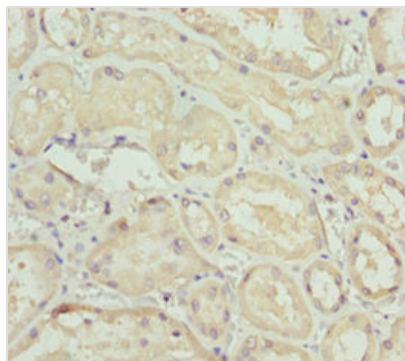
PEA15 Antibody

Product Code	CSB-PA621865DSR2HU
Storage	Upon receipt, store at -20°C or -80°C. Avoid repeated freeze.
Uniprot No.	Q15121
Immunogen	Recombinant Human Astrocytic phosphoprotein PEA-15 protein (1-130AA)
Raised In	Rabbit
Species Reactivity	Human, Mouse
Tested Applications	ELISA, WB, IHC, IF; Recommended dilution: WB:1:500-1:2000, IHC:1:20-1:200, IF:1:50-1:200
Form	Liquid
Conjugate	Non-conjugated
Storage Buffer	PBS with 0.02% sodium azide, 50% glycerol, pH7.3.
Purification Method	Antigen Affinity Purified
Isotype	IgG
Clonality	Polyclonal
Alias	Astrocytic phosphoprotein PEA-15 (15 kDa phosphoprotein enriched in astrocytes) (Phosphoprotein enriched in diabetes) (PED), PEA15
Immunogen Species	Homo sapiens (Human)
Research Area	Cell Biology
Target Names	PEA15

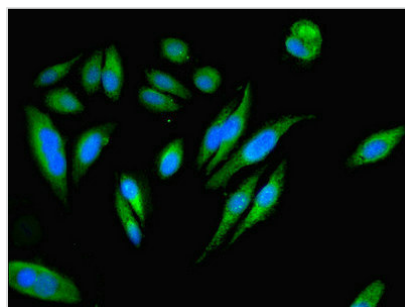
Image



Western blot
 All lanes: PEA15 antibody at 1.9 µg/ml + Mouse brain tissue
 Secondary
 Goat polyclonal to rabbit IgG at 1/10000 dilution
 Predicted band size: 16, 18 kDa
 Observed band size: 16 kDa



Immunohistochemistry of paraffin-embedded human kidney tissue using CSB-PA621865DSR2HU at dilution of 1:100



Immunofluorescent analysis of HeLa cells using CSB-PA621865DSR2HU at dilution of 1:100 and Alexa Fluor 488-conjugated AffiniPure Goat Anti-Rabbit IgG(H+L)