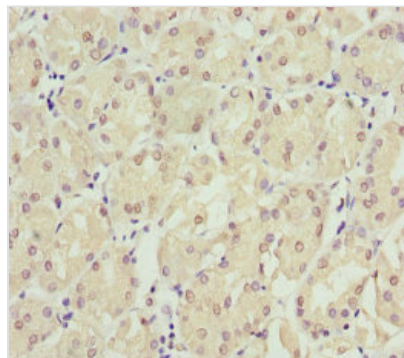




EPPIN Antibody

Product Code	CSB-PA022583ESR1HU
Storage	Upon receipt, store at -20°C or -80°C. Avoid repeated freeze.
Uniprot No.	O95925
Immunogen	Recombinant Human Eppin protein (22-133AA)
Raised In	Rabbit
Species Reactivity	Human
Tested Applications	ELISA, IHC; Recommended dilution: IHC:1:20-1:200
Form	Liquid
Conjugate	Non-conjugated
Storage Buffer	PBS with 0.02% sodium azide, 50% glycerol, pH7.3.
Purification Method	Antigen Affinity Purified
Isotype	IgG
Clonality	Polyclonal
Alias	Eppin (Cancer/testis antigen 71) (CT71) (Epididymal protease inhibitor) (Protease inhibitor WAP7) (Serine protease inhibitor-like with Kunitz and WAP domains 1) (WAP four-disulfide core domain protein 7), EPPIN, SPINLW1 WAP7 WFDC7
Immunogen Species	Homo sapiens (Human)
Research Area	Cell Biology
Target Names	EPPIN

Image



Immunohistochemistry of paraffin-embedded human gastric cancer using CSB-PA022583ESR1HU at dilution of 1:100

Usage

For Research Use Only. Not for use in diagnostic or therapeutic procedures.