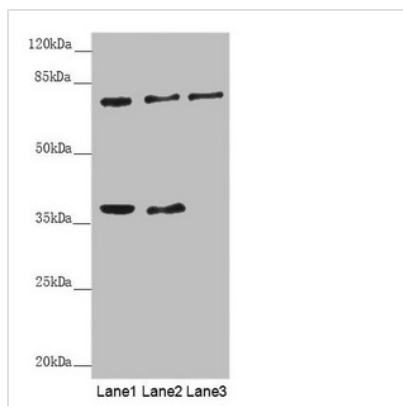




GAS2L1 Antibody

Product Code	CSB-PA859511ESR1HU
Storage	Upon receipt, store at -20°C or -80°C. Avoid repeated freeze.
Uniprot No.	Q99501
Immunogen	Recombinant Human GAS2-like protein 1 protein (130-400AA)
Raised In	Rabbit
Species Reactivity	Human
Tested Applications	ELISA, WB, IHC; Recommended dilution: WB:1:1000-1:5000, IHC:1:20-1:200
Form	Liquid
Conjugate	Non-conjugated
Storage Buffer	PBS with 0.02% sodium azide, 50% glycerol, pH7.3.
Purification Method	Antigen Affinity Purified
Isotype	IgG
Clonality	Polyclonal
Alias	GAS2-like protein 1 (GAS2-related protein on chromosome 22) (Growth arrest-specific protein 2-like 1), GAS2L1, GAR22
Immunogen Species	Homo sapiens (Human)
Research Area	Signal Transduction
Target Names	GAS2L1

Image



Western blot

All lanes: GAS2L1 antibody at 0.71µg/ml

Lane 1: A431 whole cell lysate

Lane 2: HeLa whole cell lysate

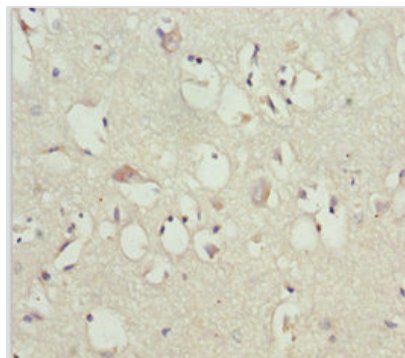
Lane 3: 293T whole cell lysate

Secondary

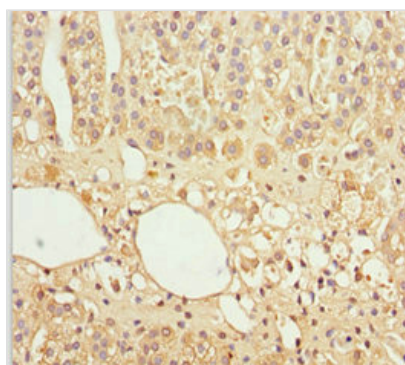
Goat polyclonal to rabbit IgG at 1/10000 dilution

Predicted band size: 73, 37, 35, 49 kDa

Observed band size: 73, 37 kDa



Immunohistochemistry of paraffin-embedded human brain tissue using CSB-PA859511ESR1HU at dilution of 1:100



Immunohistochemistry of paraffin-embedded human adrenal gland tissue using CSB-PA859511ESR1HU at dilution of 1:100

Usage

For Research Use Only. Not for use in diagnostic or therapeutic procedures.