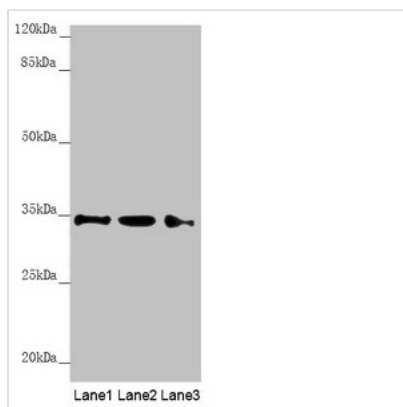




# HADH Antibody

<b>Product Code</b>	CSB-PA614992ESR2HU
<b>Storage</b>	Upon receipt, store at -20°C or -80°C. Avoid repeated freeze.
<b>Uniprot No.</b>	Q16836
<b>Immunogen</b>	Recombinant Human Hydroxyacyl-coenzyme A dehydrogenase, mitochondrial protein (1-314AA)
<b>Raised In</b>	Rabbit
<b>Species Reactivity</b>	Human, Mouse
<b>Tested Applications</b>	ELISA, WB, IHC; Recommended dilution: WB:1:1000-1:5000, IHC:1:20-1:200
<b>Form</b>	Liquid
<b>Conjugate</b>	Non-conjugated
<b>Storage Buffer</b>	PBS with 0.02% sodium azide, 50% glycerol, pH7.3.
<b>Purification Method</b>	Antigen Affinity Purified
<b>Isotype</b>	IgG
<b>Clonality</b>	Polyclonal
<b>Alias</b>	Hydroxyacyl-coenzyme A dehydrogenase, mitochondrial (HCDH) (EC 1.1.1.35) (Medium and short-chain L-3-hydroxyacyl-coenzyme A dehydrogenase) (Short-chain 3-hydroxyacyl-CoA dehydrogenase), HADH, HAD HADHSC SCHAD
<b>Immunogen Species</b>	Homo sapiens (Human)
<b>Research Area</b>	Signal Transduction
<b>Target Names</b>	HADH

## Image



### Western blot

All lanes: HADH antibody at 1.21 µg/ml

Lane 1: Mouse heart tissue

Lane 2: Mouse liver tissue

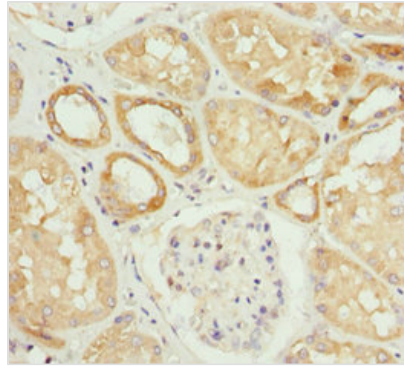
Lane 3: Mouse kidney tissue

Secondary

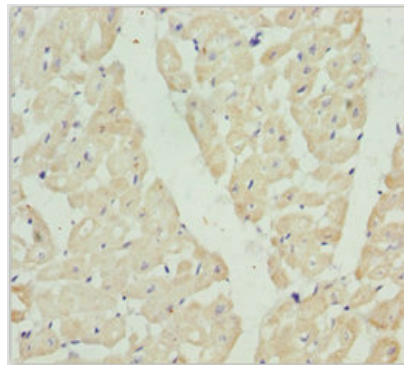
Goat polyclonal to rabbit IgG at 1/10000 dilution

Predicted band size: 35, 43, 37 kDa

Observed band size: 35 kDa



Immunohistochemistry of paraffin-embedded human kidney tissue using CSB-PA614992ESR2HU at dilution of 1:100



Immunohistochemistry of paraffin-embedded human heart tissue using CSB-PA614992ESR2HU at dilution of 1:100

## Usage

For Research Use Only. Not for use in diagnostic or therapeutic procedures.