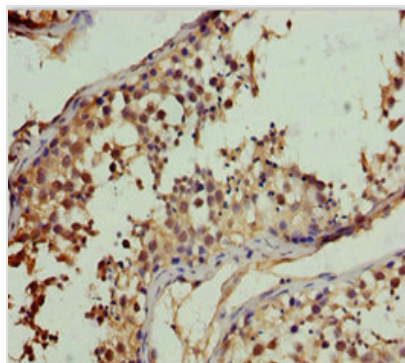




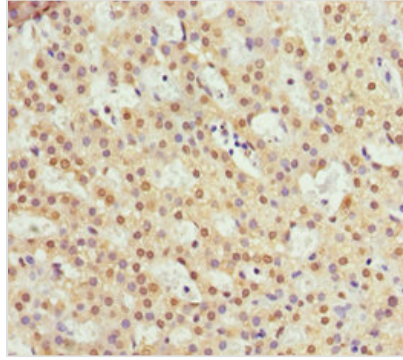
RFFL Antibody

Product Code	CSB-PA848846DSR1HU
Storage	Upon receipt, store at -20°C or -80°C. Avoid repeated freeze.
Uniprot No.	Q8WZ73
Immunogen	Recombinant Human E3 ubiquitin-protein ligase rififylin protein (1-190AA)
Raised In	Rabbit
Species Reactivity	Human
Tested Applications	ELISA, IHC; Recommended dilution: IHC:1:20-1:200
Form	Liquid
Conjugate	Non-conjugated
Storage Buffer	PBS with 0.02% sodium azide, 50% glycerol, pH7.3.
Purification Method	Antigen Affinity Purified
Isotype	IgG
Clonality	Polyclonal
Alias	E3 ubiquitin-protein ligase rififylin (EC 2.3.2.27) (Caspase regulator CARP2) (Caspases-8 and -10-associated RING finger protein 2) (CARP-2) (FYVE-RING finger protein Sakura) (Fring) (RING finger and FYVE-like domain-containing protein 1) (RING finger protein 189) (RING finger protein 34-like) (RING-type E3 ubiquitin transferase rififylin), RFFL, RNF189 RNF34L
Immunogen Species	Homo sapiens (Human)
Research Area	Cell Biology
Target Names	RFFL

Image



Immunohistochemistry of paraffin-embedded human testis tissue using CSB-PA848846DSR1HU at dilution of 1:100



Immunohistochemistry of paraffin-embedded human adrenal gland tissue using CSB-PA848846DSR1HU at dilution of 1:100

Usage

For Research Use Only. Not for use in diagnostic or therapeutic procedures.